

ФАСАД КОМПЛЕКТ

АРХИТЕКТУРНАЯ ТЕРРАКОТА



FOR GREAT MANSION

LOPO TERRACOTTA FACADE PANELS

ABOUT US

Proud to be the leading architectural terracotta facade manufacturer in China

Since founding as a family-owned company in 2002, LOPO China is known to provide architects, building owners and builders, the highest quality terracotta facades and to turn their inspiration into architectural masterpieces. Today, LOPO China has expanded into three factories in Fujian province including LOPO Thin Brick plant, LOPO Terracotta Facade Panel plant and LOPO Artificial Stone plant and extended LOPO Terracotta product to an ever-expanding line of architectural solutions.

Persistence in product quality

Having attended China Jingdezhen Ceramic Institute, our founders, Mr. Peng Xinghua and Mrs. Yang Meiyu have long been a part of the Chinese architectural terracotta industry. Mr. Peng began developing and building professional firing kilns nearly 30 years ago and has been the soul of LOPO's R&D team.

Our founders' devotion to the craft has cemented the path for our technical team and over 400 skilled workers to pour their knowledge and expertise into the process, from project-specific design of products and systems in the early stage to technical support and service in construction stage, from raw clay preparation to order delivery. Strict quality control processes are carried through the entire production line following the ISO Quality Management System to ensure sustained quality in all our products. LOPO terracotta facade products are manufactured to meet the quality standards, guidelines, and performance requirements for product imports in the European Union and USA (EU/ASTM standard).

Collaboration create value

At LOPO China, we believe that collaboration breed innovation and evolution.

We support and collaborate with architects all over the world to realize their exciting architectural designs. Their ideas in turn inspire us to innovate continuously. We keep improving our products design, firing technique, new material experiments and production process to help bring their architectural projects to fruition.

Throughout our history, our strength comes from the partnerships we have built with renowned real estate and architectural companies across China, including Vanke, Crland, Vantong, Merchants Estate companies, and Country Garden Group. We are trusted by our customers with quality and durable products, efficient service, and fast delivery.

Innovation and performance turned art

LOPO China's unwavering devotion to product quality and innovation has led us to partake in iconic architectural structures recognized at home and abroad. Including the Beijing University of Technology's gym, one of the facilities where the Beijing Olympics took place. Our products are also featured in The Hamburg House at the Expo 2010 Shanghai, featuring the theme "Sustainable Urban Development and Ecological Climate-friendly Construction." Fuzhou Strait Culture and Art Center project designed by PES-Architects, which won many international design awards, featuring in LOPO customized glazed terracotta baguettes and cladding.



LOPO New Product

Extruded Ceramic Panels

Sophisticated Finishes

Excellent Technical Quality



Contents

01	-----	The Advantages of Terracotta Façade Panels
03	-----	The Facilities of LOPO China
05	-----	LOPO Projects
69	-----	LOPO Terracotta Panel Series
95	-----	LOPO Terracotta Baguettes & Louvers
99	-----	LOPO Glazed Terracotta Panels
105	-----	LOPO 3D inkjet Terracotta Panels

Why Terracotta Facade Panel?

Natural stone, aluminum panel, glass are very common materials in application of architectural façade cladding projects. However, terracotta façade panel, debuted in the late 1980s, is just like a rising star in this area. What are the comparable strengths of Terracotta Panel?

Green and Environment-friendly

Terracotta Panels' raw material is natural clay, and the terracotta panel is colored by making use of the clay's natural color and luster, with very little or no dyeing chemicals added. "Mono color before, but colorful after the kiln firing", the Terracotta Panels are with diverse colors, the color and luster are natural and in rich texture, and it will never fade, which well meets the modern architecture's design demands for mainstream colors. Meanwhile, the products are without any radiation and can be 100% recycled, which are indeed green construction materials friendly to the environment.

Excellent Building Performance Index

Terracotta Panel products are produced through processes of strict raw material processing, high pressure extrusion forming, and 1,200 °C high temperatures burning, with very stable and even physicochemical properties. As curtain wall materials, Terracotta Panels have features of fire safety, acid and alkali resistance, scratch and wear resistance, and high compressive strength. Even placed in environments of ultra-high temperature or of low temperature and frost, the Terracotta Panels can keep great stability performance.

Open System, Thermal and Sound Insulated

Terracotta Panels have a specific open installation method formed by transverse seam lapping, which is good for protecting the building's main structure from bad weather and air pollution's erosion, and can prevent the wall space from deposits to maintain the curtain wall's beauty; meanwhile, an air layer which can "breathe free" between the surface material and the wall, with the addition of the hollow design of the Terracotta Panel product itself, can effectively cut off heat conduction and improve the building wall's acoustic performance, and the whole system has thermal insulation, sound insulation, ventilation, and moisture removing functions, which can effectively improve the indoor temperature environment in Summer to eliminate the heat bridge effect and save energy consumption.

Waterproof and Anti-collision Design, Pressure-proof and Anti-seismic

Terracotta Panels are with splicing design for installation based on the Rain Screen Principle, and a special design using EPDM gaskets connecting the parting between interfaces on both ends, can effectively reduce rainwater invasion, prevent Terracotta Panels' lateral movement, and prevent the collision between adjacent Terracotta Panels. Meanwhile, it uses flexible insulation spacers to separate Terracotta Panels from hanging articles, to separate hanging articles from cross beams, to improve the system's anti-seismic performance, to avoid electrolytic corrosion between different metal materials, and also to eliminate noise and distortion. The improved Terracotta Panel system can reach 10 degree anti-seismic performance, especially suitable for architectures having demands for wind resistance and aseismic performance.

Easy Installation, Quicker Construction Progress

Terracotta Panels do not need slotting on the back during construction, and can be installed directly; meanwhile, the panels can be cut at will, and laid out flexibly, so the Terracotta Panels can be installed very soon after the curtain wall's keels are fixed.

Convenient Maintenance

The surface of Terracotta Panel curtain wall is anti-static, not easy to adsorb dust. If there is dust on the surface, it is easy to be cleaned after rain wash, so the Terracotta Panel has a certain feature of self-cleaning, which can reduce the Terracotta Panel curtain wall's cleaning and maintenance costs, and to high-rise buildings, this cannot be ignored.

For daily maintenance, if a certain Terracotta Panel needs to be replaced, we just need to physically damage the broken Terracotta Panel to singly replace it with a new one, without affecting the whole Terracotta Panel curtain wall.





01

01

Imported Vacuum Extruders



02

02

Drying Systems (100 Meters, 5 Layers)

To improve and innovate our products continuously, LOPO China has been constantly investing in procuring industry-leading, advanced facilities, and customizing and localizing them to better fit our own process features. This latest NO.3 production line has enhanced our production capacity for various complex customized products and met higher environmental indicators in the production process.

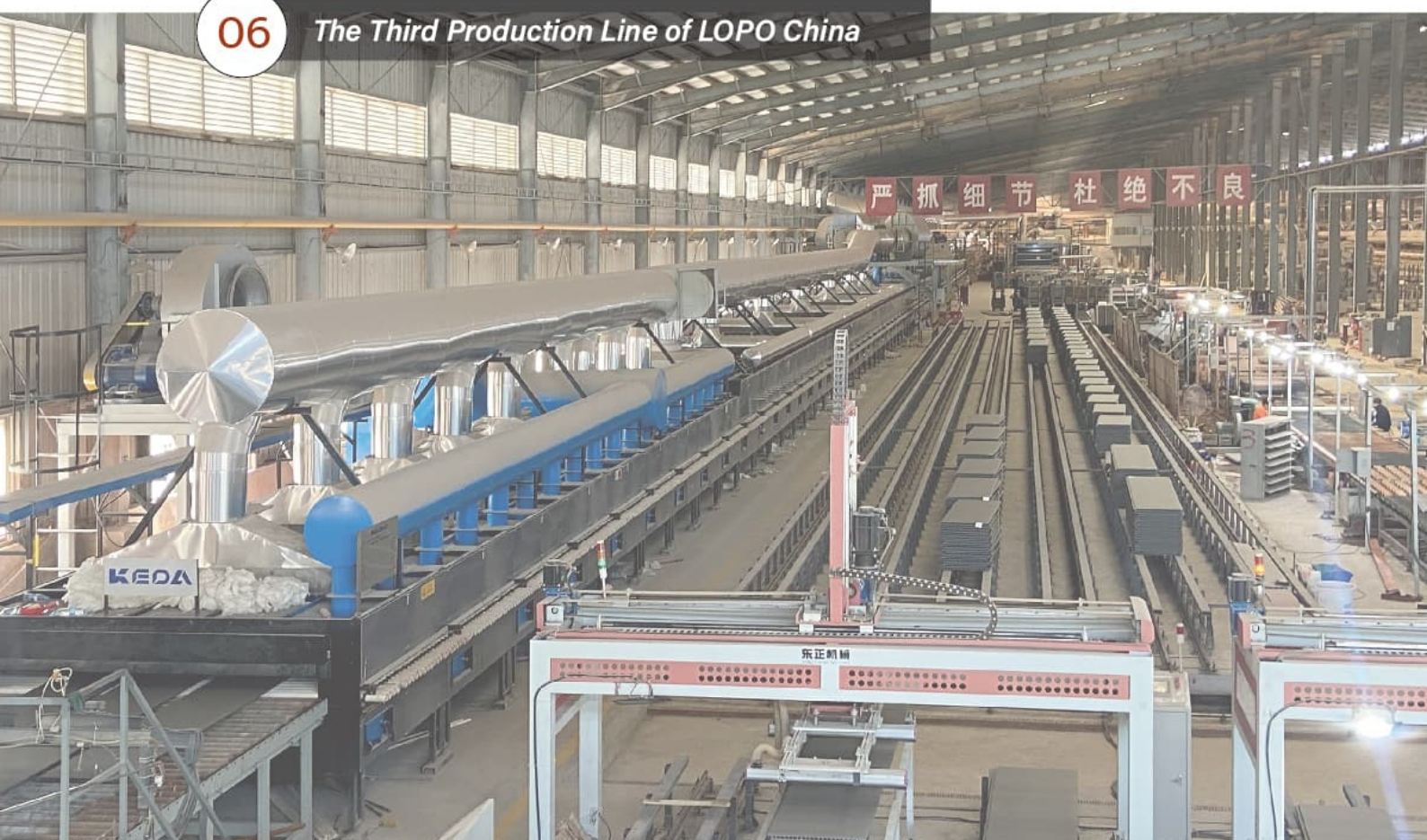
05 Automatic CNC Carving Machines

04 Automatic Cutting, Polishing and Edge Grinding Equipment

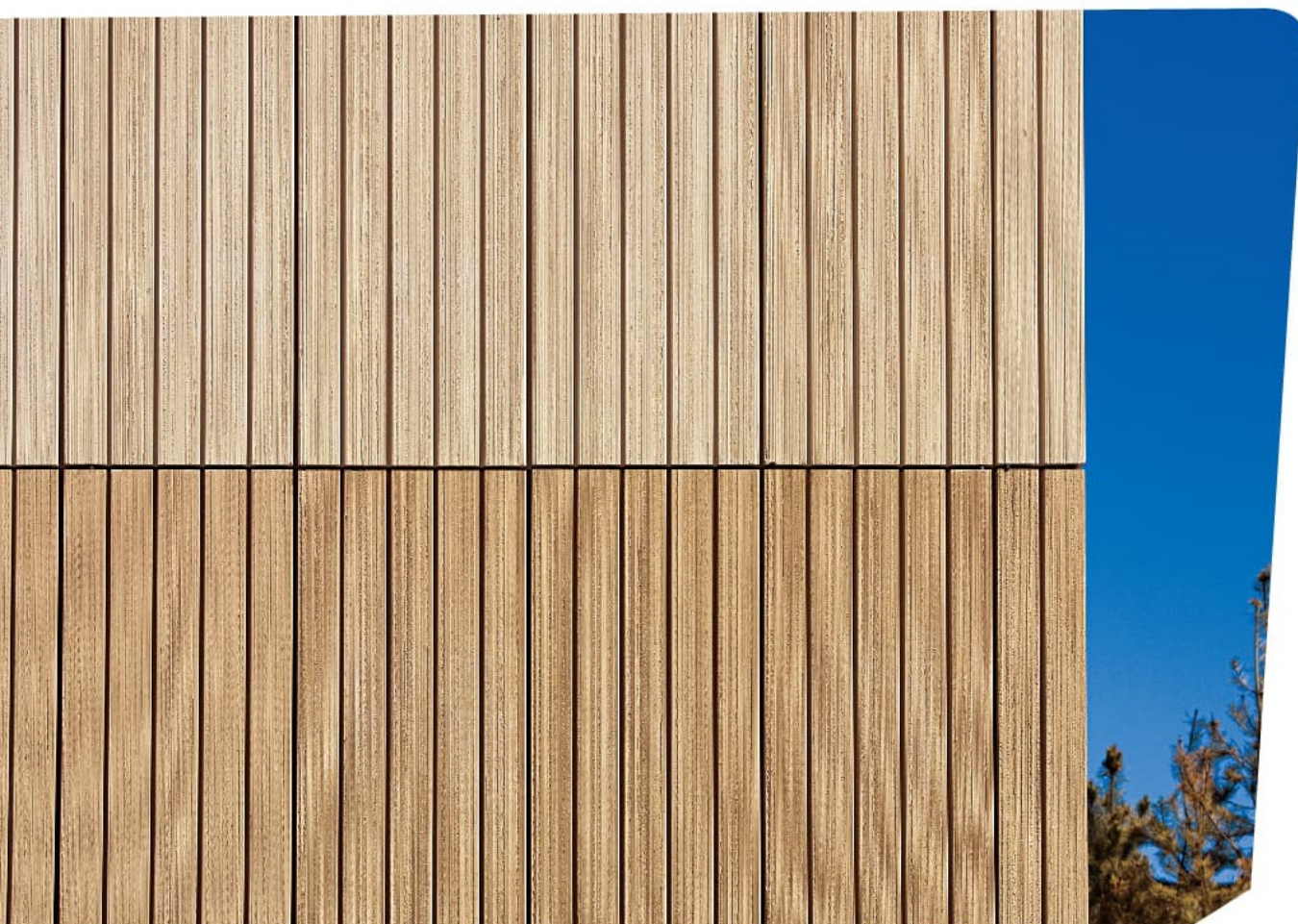
03 260 Meters Roller Hearth Kilns with Advanced Firing Systems



06 The Third Production Line of LOPO China







Zhangjiakou Winter Olympic Village (Hebei)

2020-2021

Architects: Tsinghua University's Institute of Architectural Design and Research

Terracotta Panels (Texture: Sandblasted, Combed)

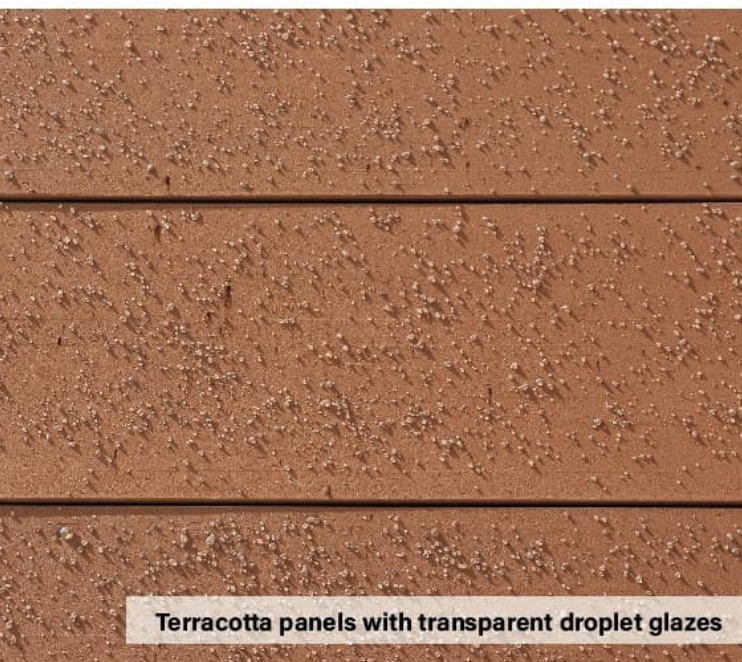
Item NO: FWGL353501/TWGL137501/TWGL227701

Size: 350x35 / 132x75 / 220x77mm





Terracotta louvers in varied color



Terracotta panels with transparent droplet glazes



Curved terracotta elements

Tongchuan Museum (Tongchuan, Shanxi)

2019

Architects: Xi'an Architectural Design And Research Institute Co.,LTD

Terracotta Panels (Texture: Transparent Droplet Glazes, Combed, Sandblasted)

Terracotta Louvers

Item NO: FLD3020576/FHDX3020576/FRD3020576

Size: 300x20 / 50x100mm







The custom-made, diverse-shaped terracotta cladding products connect the details of the building facade and integrate them into an organic and harmonious whole, which ultimately presents the smooth and soft architectural lines beautifully as expected by the architects.



The Science and Technology Training Base for Chinese Children (Beijing)

2015

Architects: East China Architectural Design Institute Co., Ltd.

Terracotta panels and baguettes in special shape

Item NO: F3020768 T40100768

Size: 3300x900x20mm



The TIMES I-City adopts integrated design of architecture, landscape and interior. The entire landscape is made of 1.7 million pieces of various terracotta facades from LOPO China, including long format bricks, floor tiles, small terracotta slabs, clay bricks and terracotta baguettes.





LOPO[®]
www.lopochina.com

TIMES I-CITY (Foshan, Guangdong)

2020

Architects: DOMANI

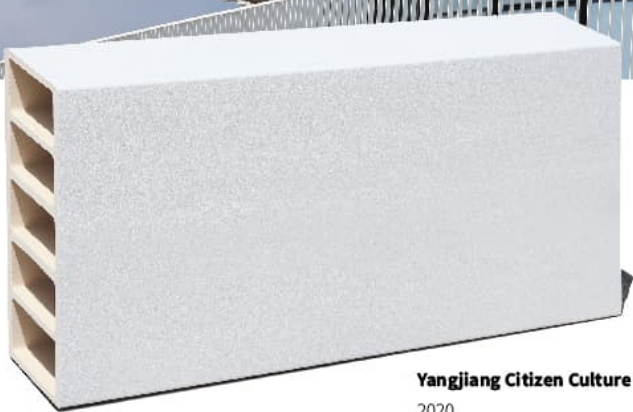
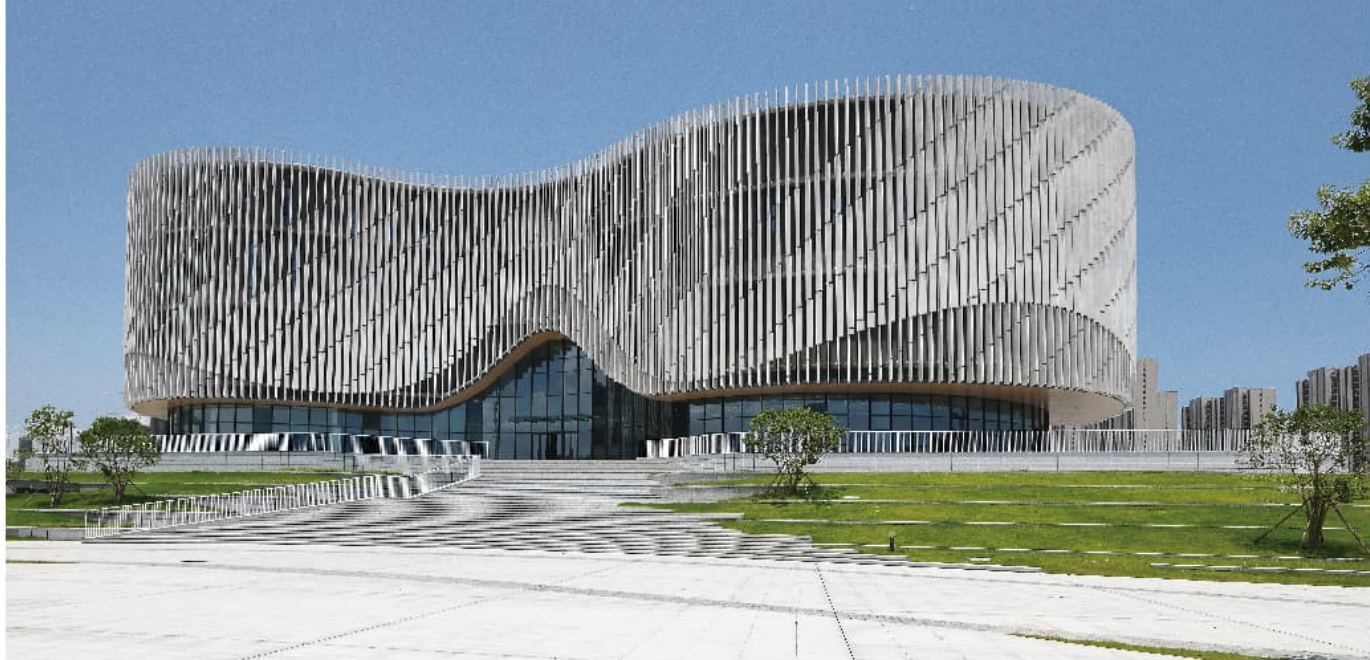
Developer: TIMES CHINA

Terracotta Panels (Flashing Shades)

Item NO: FCK2420635

Size: 240x600x20mm





Yangjiang Citizen Culture and Art Center Complex (Yangjiang, Guangdong)

2020

Architects: South China University of Technology Architectural Design and Research Institute Co., Ltd.

Terracotta Element (Glazed)

Item NO.:TCY400120003

Size:400x120x900mm



Dreamland Club (Guangdong)

2019

Architects: DOMANI

Developer: TIMES CHINA

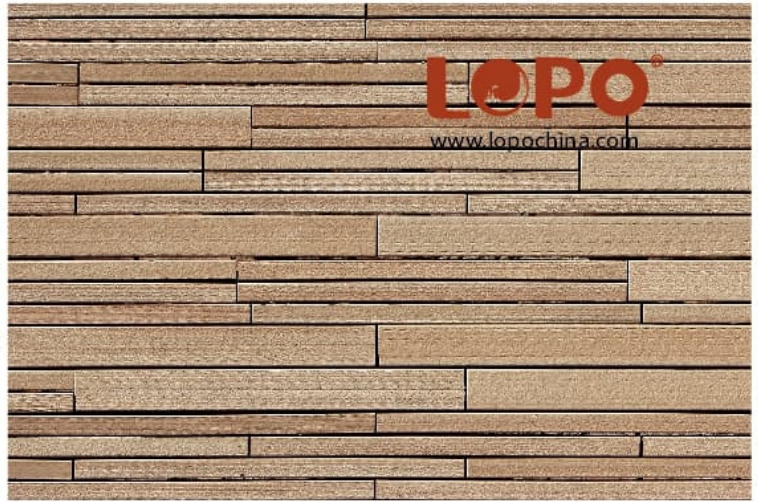
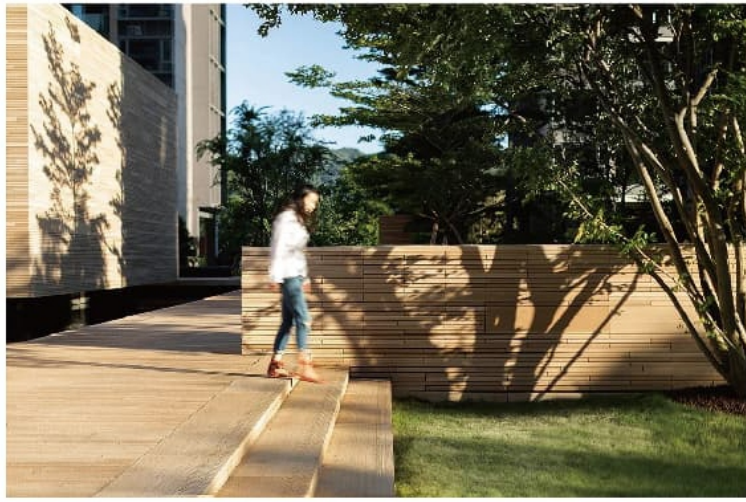
Terracotta Panels (Texture: Sandblasted Timber Look)

Item NO.: BS820258/BS2720258/BS1840258/BS4502258/BS8502258/BS2750258/BS550258

Size: 86x20/270x20/180x40/40x50/86x50/270x50/526x50mm







Dreamland Club (Guangdong)

2019

Architects: DOMANI

Developer: TIMES CHINA

Terracotta Panels (Texture: Sandblasted Timber Look)

Item NO.: BS820258/BS2720258/BS1840258/BS4502258/BS8502258/BS2750258/BS550258

Size: 86x20/270x20/180x40/40x50/86x50/270x50/526x50mm



Located in the east of Sanxi Village, the project serves as the supporting facility, a clubhouse, of the residential project of Dreamland. It is intended to provide the residents with a comprehensive social space, bringing fitness, bar and restaurant together. Sanxi Village, located in the southeastern part of the East District of Zhongshan City, Guangdong Province.

The designers spent nearly a year working with LOPO China to co-develop this Terracotta Cladding material that fully restores the sense of soil. They wanted to maintain the high weathering resistance of the Terracotta Cladding while ensuring that the dappled color difference can be kept and extended during its contact with the air, UV rays and rain.





Dongguan Middle School (Dongguan, Guangdong)

2022

Architects: South China University of Technology Architectural Design and Research Institute Co., Ltd.

Terracotta Panels (Texture: Sanding and Brushing)

Item NO.: FSH6021886

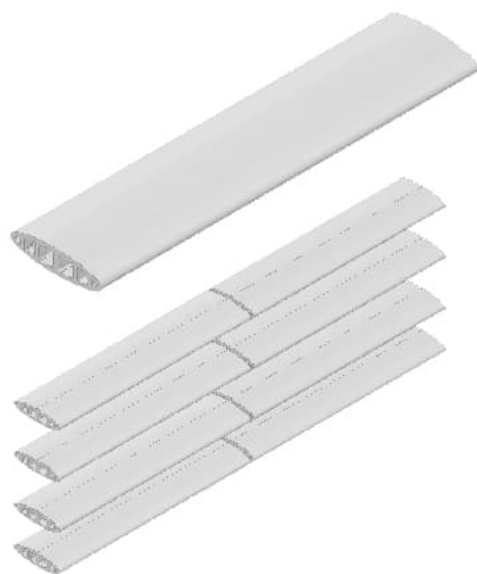
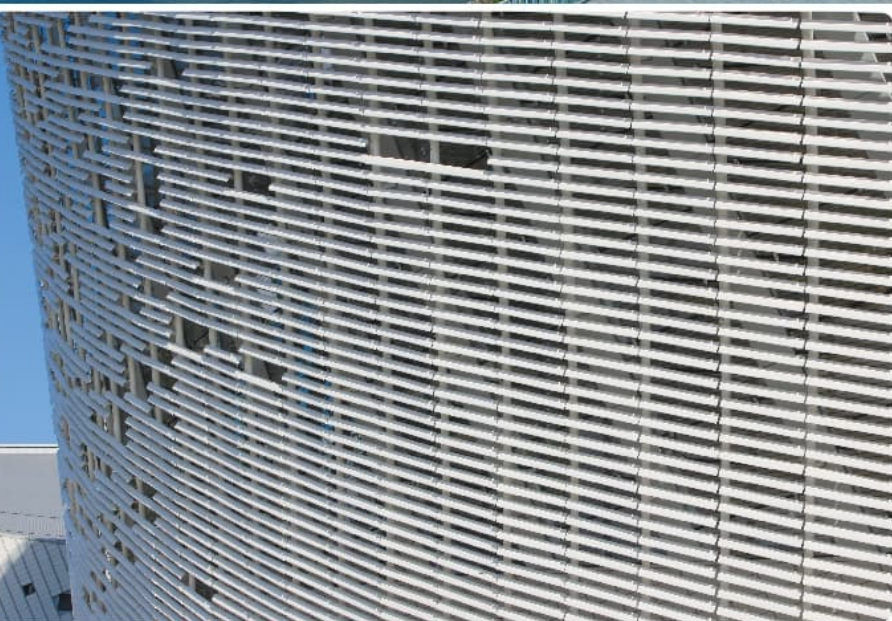
Size: 600x21mm



New Park of the Chengdu Branch of the Chinese Academy of Sciences (Chengdu, Sichuan)
2020

Architects: China Southwest Architectural Design and Research Institute Corporate Ltd
Chengdu Tianfu New Area Institute of Planning and Design Co., Ltd
Glazed Architectural Terracotta (9 colors)
Item NO.: FY3022634(2)/FY20/6030634(2)/FY3022633/(X)/FY20/6030633/FY3022568(3)/FY20/603056/FY3022569
(4)/FY20/6030569/FY3022572(5)/FY20/6030572/FY3022875/(M)/FY20/6030875
Size: 300x22/200/600x30mm





Fuzhou Strait Culture Art Center (Fuzhou, Fujian)

2017

Architects: Pekka Salminen (chief designer) - PES-Architects Ltd.,

Terracotta Panels (White Glazed)

Terracotta Louvers (White Glazed)

Item NO.: FY3924003/TY55225003

Size: 392x774x24/55x225x1780m







Song Porcelain Museum (Suining, Sichuan)

2018

Architects: Chinese Architecture and Design Research Group

Cracked Glazed Terracotta Panels

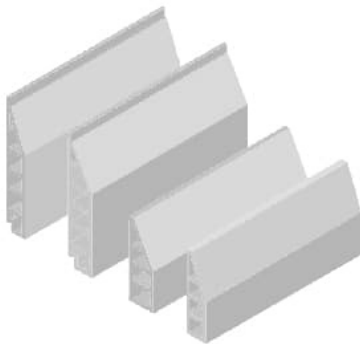
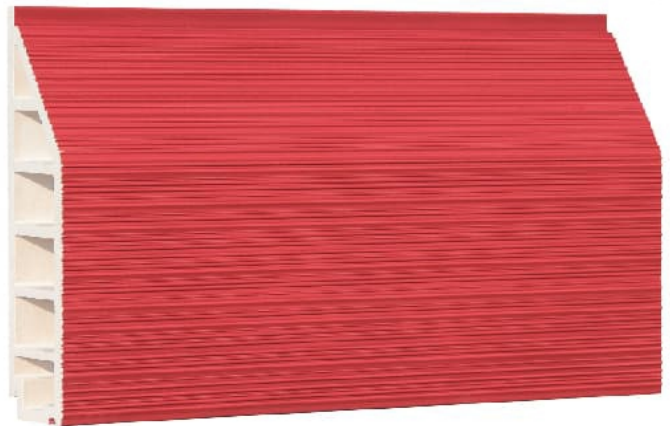
Item NO.: FBY7525994

Size: 750x25mm



Shenyang Youth Activity Center (Shenyang, Liaoning)
2016-2021
Architects: Chinese Architecture and Design Research Group
Terracotta Panels (Natural Texture)
Item NO.: F3018770
Size: 300x18x1200m





Hunan Art Museum (Changsha, Hunan)

2019

Architect: Shanghai Architectural Design & Research Institute Co., Ltd (SIADR), Huajian Group

Terracotta Panels (White Cracked Glazed)

Customized Terracotta Element (Texture: Combed and Glazed)

Item NO.: FXY3575693/FXY2375693/FXY3075693/FLY3030003/FY3030693

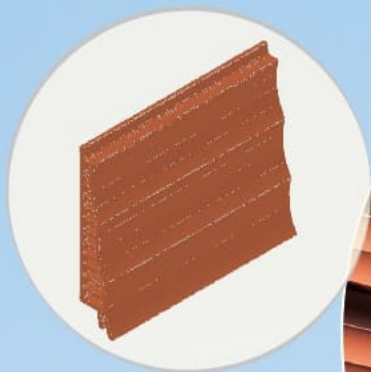
Size: 350x1196x75/230x1196x75/296x1045,1495x75/300x1484,215x30/300x1196x30mm

The architect used red glazed Terracotta Panels on a large scale. In the light and shadow, through void and solid, together with intersected Terracotta Panels, it creates a splendid color effect whose charm and beauty are beyond words. The glazed surface is ever-changing under the sunlight. The vermilion Terracotta Panels present a rich transition of warm colors, and the texture of the façade also vary with the change of light. LOPO designed and produced triangular and trapezoidal Terracotta Panels (with several different sizes) for this project, which were installed vertically and horizontally, and formed special architectural textures according to the design requirements of each building block.

LOPO®
www.lopochina.com







Obstetrics & Gynecology Hospital of Fudan University, Qingpu Branch (Shanghai)

2021-2022

Architects: Tongji Architectural Design (Group) Co. (TJAD)

Terracotta Facades (Wavy-textured)

Item NO.: FB3229637/FB3229633/FB3229632/

FB3229771/FBJ4229637/FBJ4229632/FBJ4229633/

FB3227637/FB3227633/FB3227632/FB3227771

Size: 300x29/400x29/300x72mm





科启宸 CITY

科智云新苑



万科启宸

高品质·泛科技住宅



Vanke Community Center-City Next (Shanghai)

2018

Architect: HHD

Double-triangular shaped Terracotta Panel

Item NO.: FT408169/F402269/F452269

Size: 394x81/394x22/444x22mm



The First Affiliated Hospital of China Medical University, Hunnan Branch (Shenyang, Liaoning)

2017

Terracotta Panels (Natural Finish, 4 Colors)

Item NO.: F602263/6022692/6022670/6022883

Size: 350/400/500/600/700x22mm





Guangzhou International Campus of South China University of Technology

2020

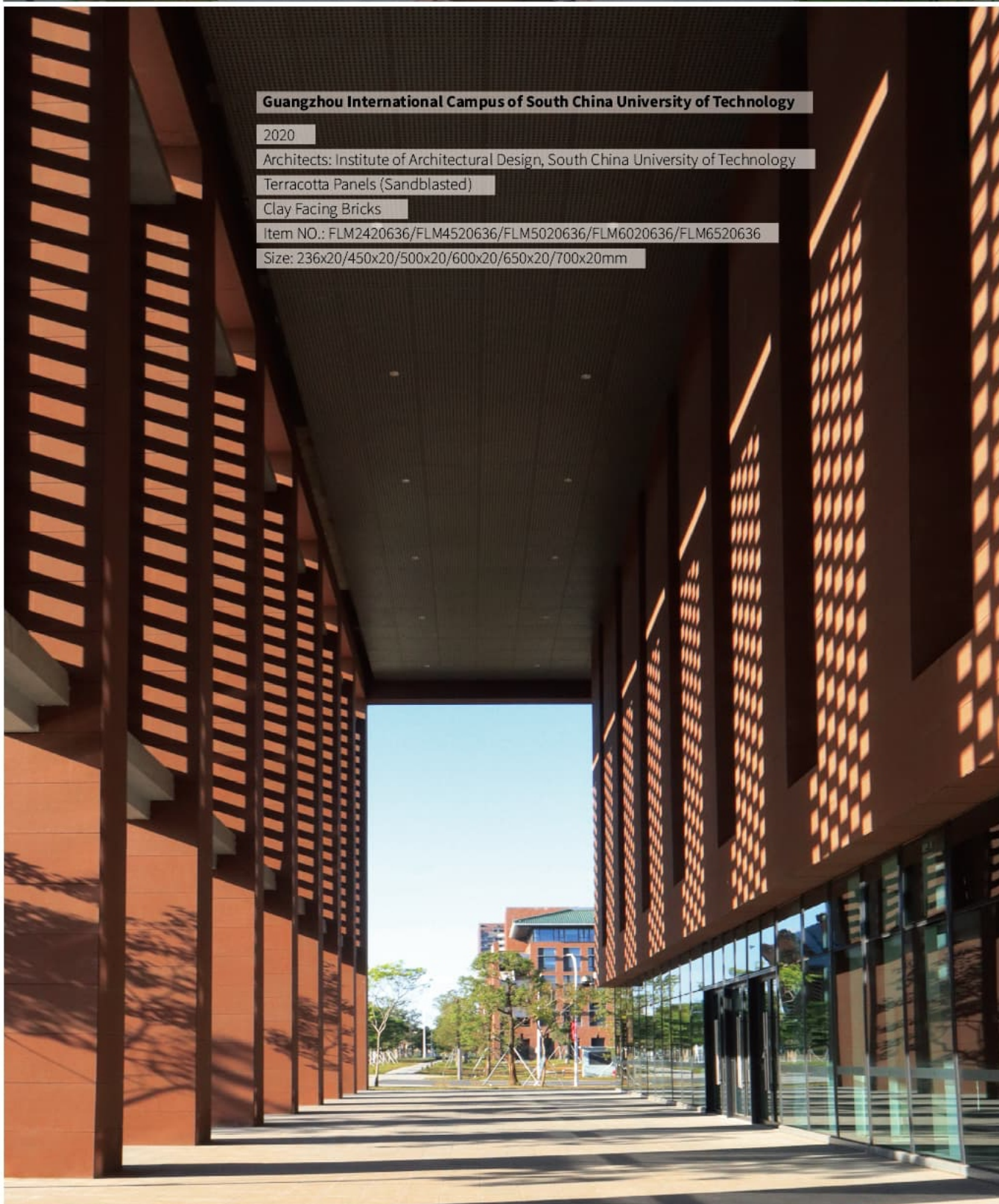
Architects: Institute of Architectural Design, South China University of Technology

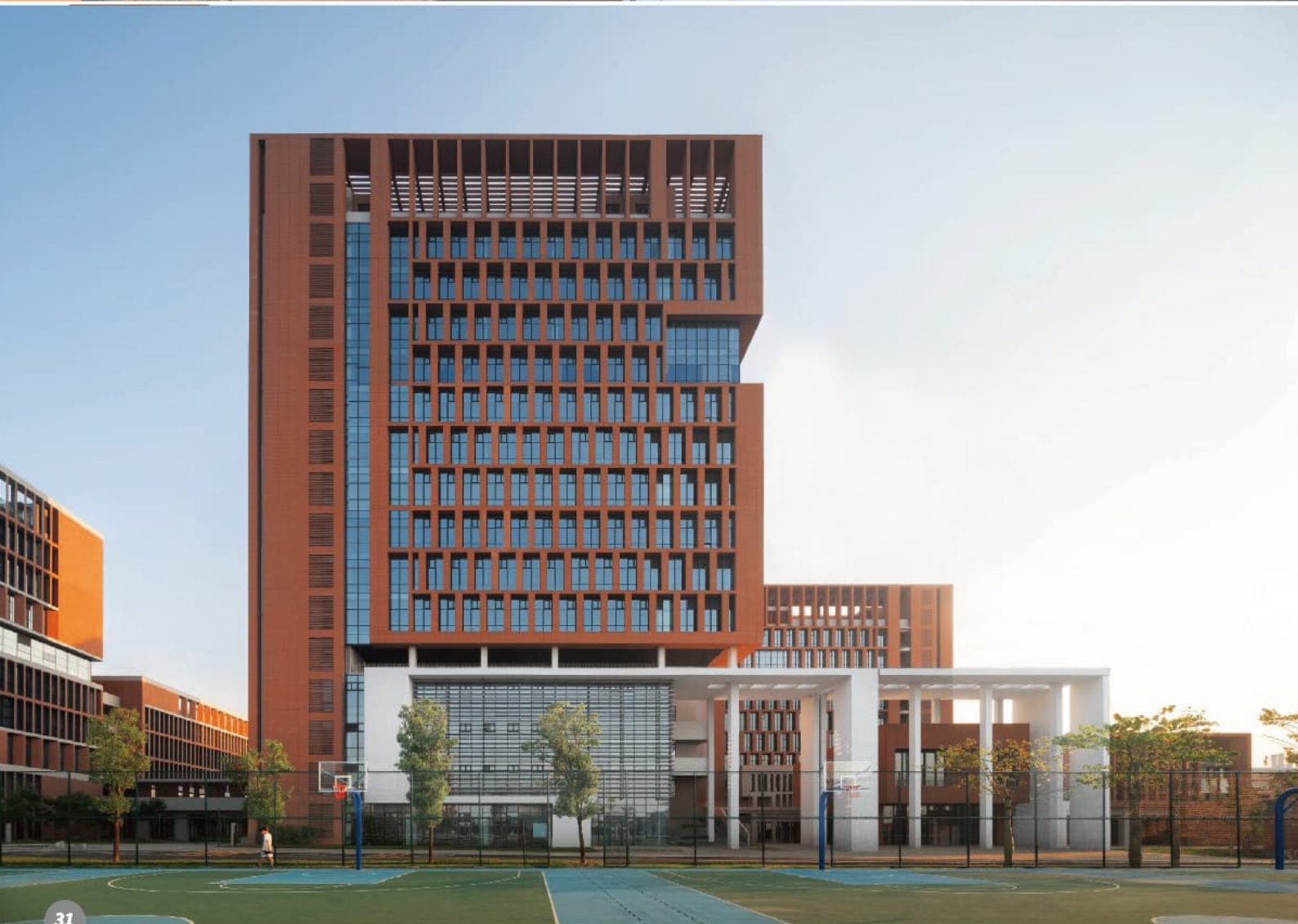
Terracotta Panels (Sandblasted)

Clay Facing Bricks

Item NO.: FLM2420636/FLM4520636/FLM5020636/FLM6020636/FLM6520636

Size: 236x20/450x20/500x20/600x20/650x20/700x20mm







LOPO China provided more than 80,000 square meters of Terracotta Cladding products for this project, including a variety of Thin Brick, Facing brick, terracotta panels and terracotta baguettes. The facade of the public experiment platform of the campus adopts three types of LOPO's wirestruck Thin Brick with different shades. With the help of natural texture of terracotta, it renders a warm and peaceful campus ambience. The buildings in the data center area chooses LOPO's full brick. The facade of the teaching and research buildings of each college adopts LOPO's Terracotta Rainscreen system.



ECNU XIPING BILINGUAL SCHOOL (Xiamen, Fujian)

2022

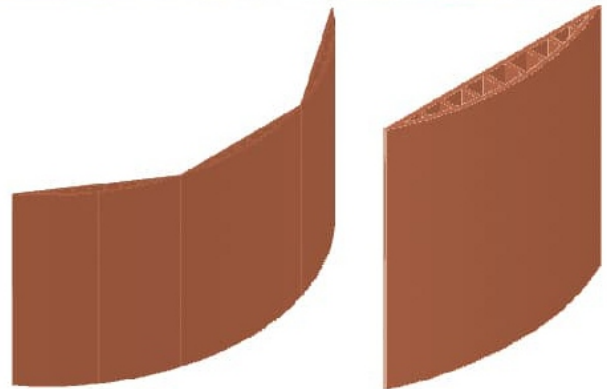
Terracotta Panels (Natural Finish)

Clay Face Bricks

Item NO.: F3030011/F6030011/F3030633/F6030633

Size: 300x30/600x30mm





Hebei University's library is one of numerous educational projects utilizing LOPO terracotta facade products. Featured with classic educational building style, the building's exterior walls are clad with deep red terracotta panels, arc-shaped elements and terracotta louvers, in harmony with the other surrounding red brick buildings built previously.

Hebei University's Library

2015

Architects: Tongji Architectural Design Group

Terracotta Panels

Terracotta Arc-shaped elements

Terracotta Louvers

Item NO. : F3322637/F3522637/TR1256637/T5050637/FS3844637/FS5135637

Size: 330x900x22mm





Western China Science and Technology Innovation Harbor (Xi'an, Shaanxi)

2018

Owner: Xi'an Jiaotong University

Architects: Hangzhou CCTN Architectural Design Co., Ltd. (lead)

Terracotta Panels (Texture: Combed)

Item NO.: FX4522637/FX5422637/FX5722637/FX6022637/FXJ6022637/FX6122637/FX6522637/FX6922637

Size: 450x22/540x22/570x22/600x22/600x22/610x22/650x22/690x22mm





Yucai Junior Middle School (Qingdao, Shandong)

2013

Terracotta Panels (Texture: Wood Grains)

Item NO.: FW6018217 F3018003

Size: 150/250/350/400x1000x18mm/300x900x18mm



Architects chose LOPO terracotta panel with wood-grain texture to achieve the effect of a fairy-like forest. Light-red and sandy-yellow tiles both in 4 different widths: 150mm, 250mm, 350mm and 400mm were randomly arranged to create a very natural and rich wood-grain patterns for the facades. The combination of wood grain panels and white panels brings a more dynamic visual effect to the campus.



State Key Laboratory of Qilu University of Technology (Jinan, Shandong)

2018

Architects: Tong Yuan Design Group Co., LTD.

Terracotta Panels (Texture: Combed, Glazed)

Item NO.: FXY6020003

Size: 600x20x1200mm



Shanghai Pudong Airport Satellite Hall

2020

Curved Terracotta Elements (Glazed)

Item NO.: FS203063/FGS503063/FGS743063/FGS753063/FYS2030239

X MUSEUM (Beijing, China)

2020

Architects: TEMP Architects

Special Shaped Terracotta Elements

Item NO.: FGS2242883







Beicai Group (Beijing)

2016

Terracotta Panels (Natural Finish)

Item NO.: F3022632/F4022632

Size: 300x22/400x22mm

Zhongguancun NO.1 (Beijing)

2018

Architects: Boston International Design Group

Shanghai Bocheng Architectural Design Co., Ltd.

Engineering Design Institute of General Armament Department

Terracotta Panels: (Natural Finish)

Terracotta Baguette (Cross-Section: Rectangle, Square)

Item NO.: F3020231/F4020231/F4020886/T5050231/T50150231

Size: 300x20/400x20mm 50x50/50x150x1200mm





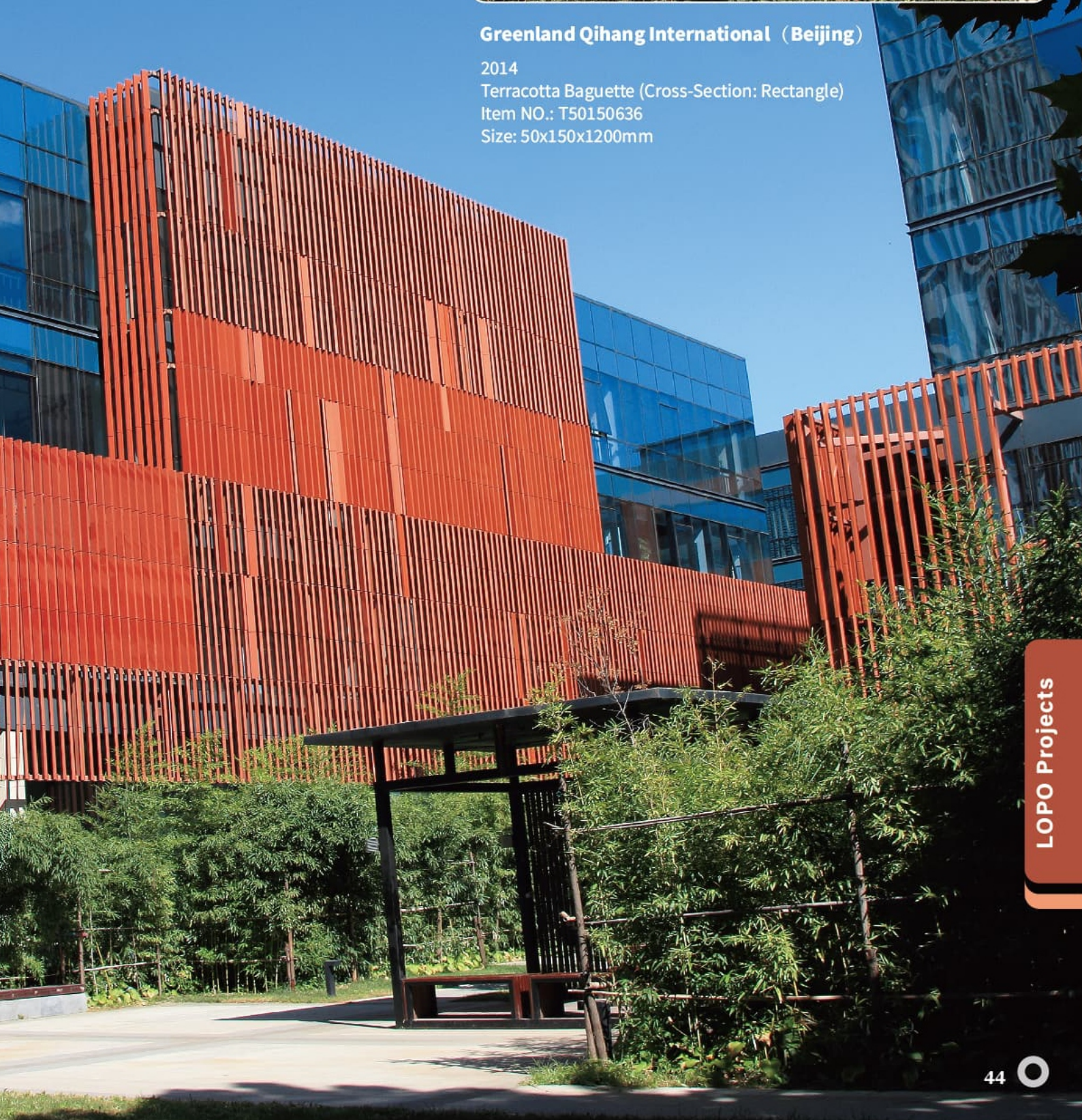
Greenland Qihang International (Beijing)

2014

Terracotta Baguette (Cross-Section: Rectangle)

Item NO.: T50150636

Size: 50x150x1200mm







China Eastern Airlines Beijing Branch Base (Beijing)

2017

Owner: Shanghai Eastern Airlines Investment Co., Ltd.

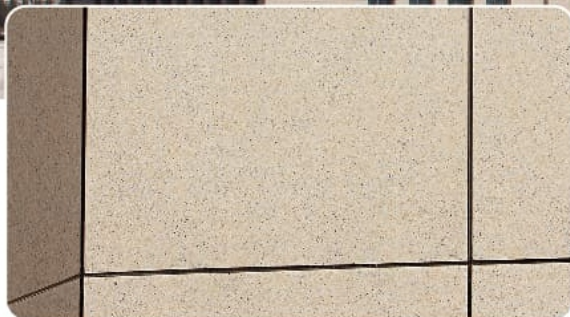
Architects: Shanghai UAE Architectural Planning & Design Co., Ltd.

Terracotta Panels (3D Inkjet Panels)

Item NO.: FD4030008/FD4530008/FD6030008/ F4030887/F6030887

Size: 400/450/600x30mm





Office Building (Taiyuan, Shanxi)

2018-2019

Terracotta Panels (3D Inkjet Panels, Granite Surface)

Item NO.: FP6020660

Size: 600x20mm

Castle in the Sky (Hangzhou, Zhejiang)

2022

Owner: Vanke

Terracotta Panels (Glazed, Wavy-textured)

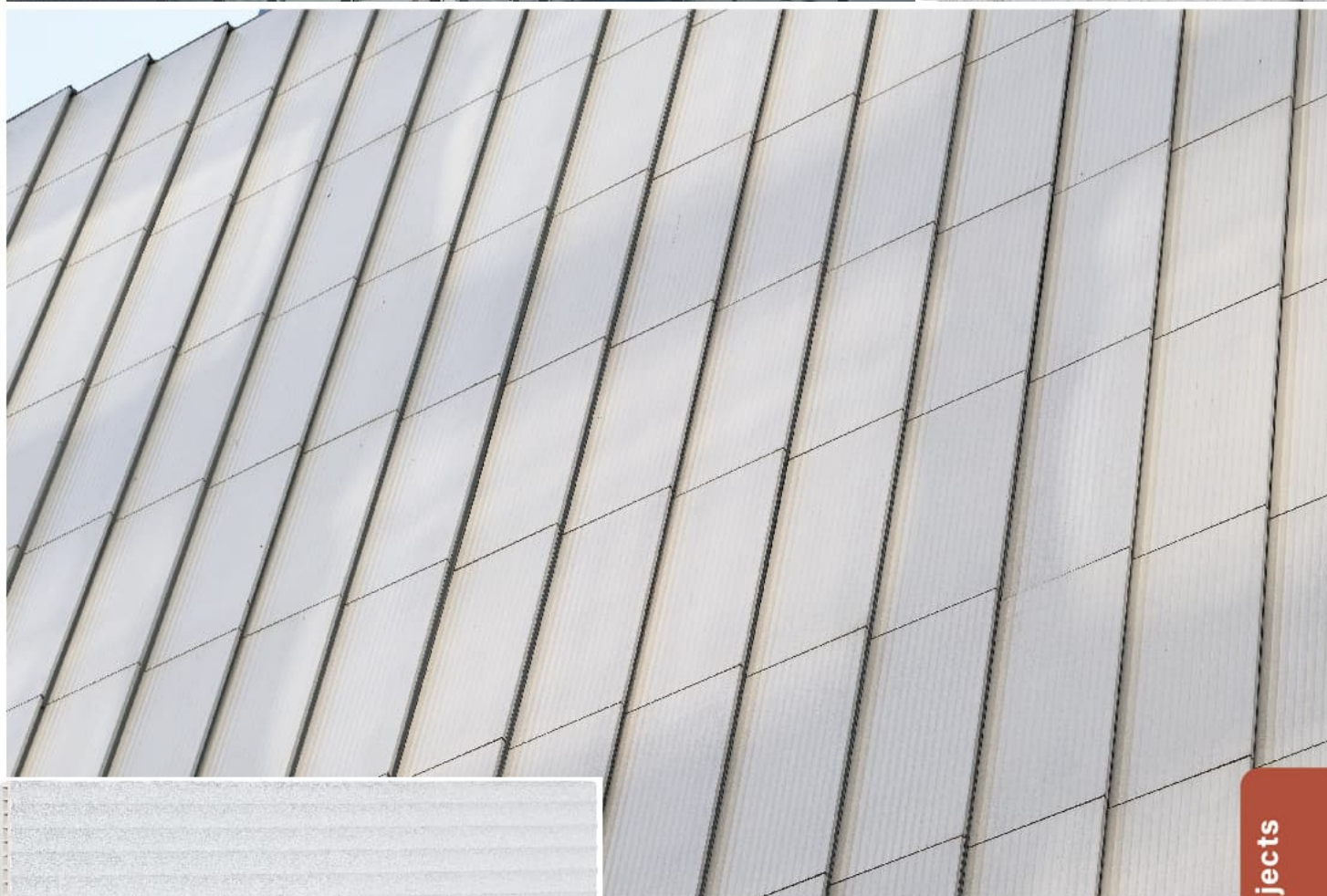
Item NO.: FYB5930003/FYB7430003/FYB6130003/FY4930003/F4930889

Size: 590x30/740x30/605x30/493x30/493x30mm





LOPO®
www.lopochina.com



Digital China International Innovation Center (Shenzhen, Guangdong)

2022-2023

Architects: Architectural Design and Research Institute of Guangdong Province
Shenzhen Huahui Design

Terracotta Panels (Cracked Glazed, Wavy-textured)

Item NO.: FBY6730003/FBY7230003/FPG5730003

Size: 679x30/675x30/725x30mm







Happiness City (Zunyi, Guizhou)

2014

Owner: China Construction

Terracotta Panels (Texture: Wood Grained)

Item NO.: FW3018617

Size: 300x900x18mm



Riverside Green Residence (Taiyuan, Shanxi)

2017

Terracotta Panels (Natural Finish)

Terracotta Baguettes (Cross-Section: Square)

Item NO.: F4521003, T5050003

Size: 450x21mm, 50x50mm





Hankou Bank Archives Center (Wuhan, Hebei)

2019

Architect: Central South Architectural Design Institute Co., Ltd (CSADI)

Terracotta Panels (Natural Finish)

Terracotta Baguettes (Cross-Section: Rectangular)

Item NO.: F4530012/F6030012

Size: 450x30/600x30mm



Everbright Eco-friendly Energy Power Plant (Suzhou, Jiangsu)

2020

Architects: Institute of Architectural Design, South China University of Technology

Terracotta Panels (Texture: Combed)

Item NO.: FX6025880

Size: 600x25mm





Wind Communication Intelligent Manufacturing Technology Park (Nanchang, Jiangxi)

2016

Terracotta Panels (Natural Finish)

Item NO. : F3020992/F4020992/F3020999

Size: 300x895x20mm



HUAWEI's Tuanbowa-Park (Dongguan, Guangdong)

2020

Architects: OBERMEYER Planen + Beraten GmbH

Terracotta Panels (Natural Finish)

Terracotta Baguettes (Cross-Section: Square)

Item NO. : T5050632/F4530632

Size: 50x50/450x30mm



LOPO®
www.lopochina.com

Project Name: China Life Care Garden-The Happiness Land

2020

Property Owner: China Life Insurance

Architects: AXS SATOW INC.

Terracotta Panels (Texture: Sandblasted, Combed, Grooved)

Item NO: F4030884/FG2030218/FG2030884/FG4030218/FG4230218

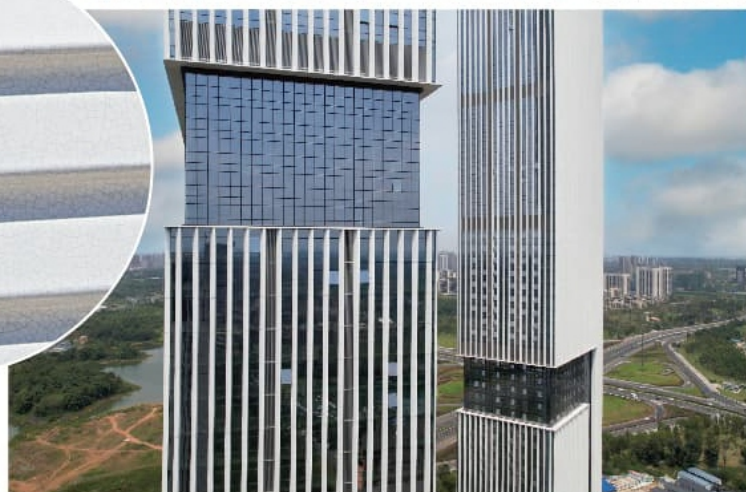
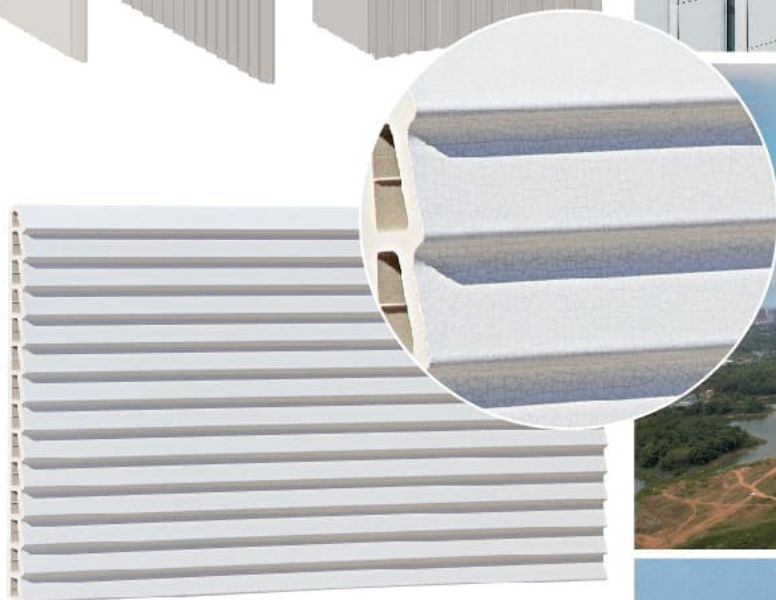
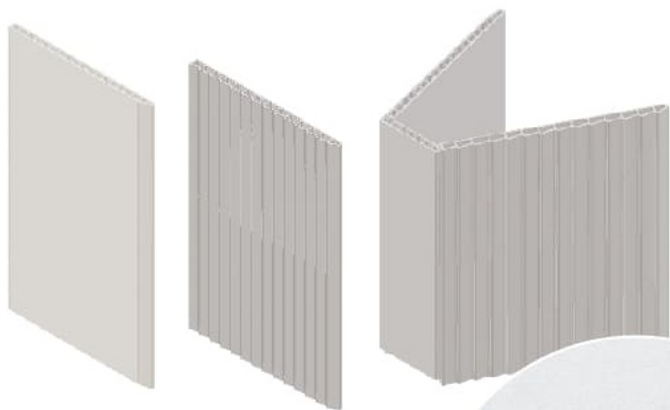
/FG4230218/FG4530218/FG4530884/FH3530889/FGH4030889/FH4030889

/FH4230889/FH4530889/FH5130889/FH6830889/FK3530012/FK4030218

/FK4230012/FK4230218/FK4530218/FKS4230012

Size: 436x30 / 200x30 / 400x30 / 425x30 / 450x30mm





LA CADIERE CENTER (Chengdu, Sichuan)

2021-2022

Super-tall buildings Project (More than 216M)

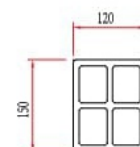
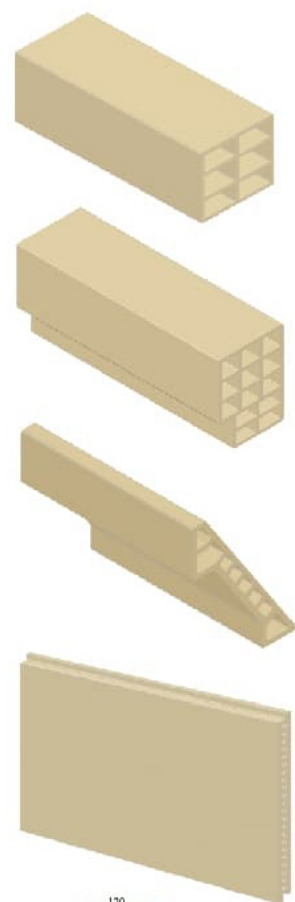
Architects: Soo K. Chan

Design team: SCDA Architects

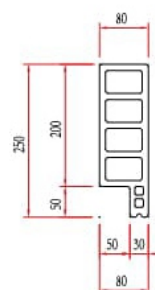
Terracotta Panels (White Cracked Glazed)

Item NO.: FBY6038003/FY2130003/FY5430003/FY5530003

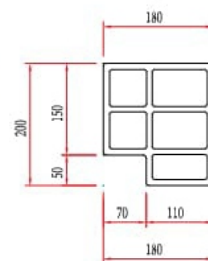
Size: 603x38/211x30/544x30/548x30mm



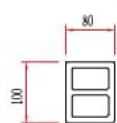
1#



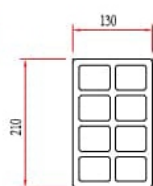
2#



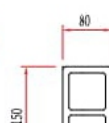
3#



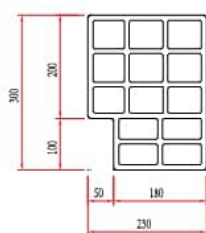
4#



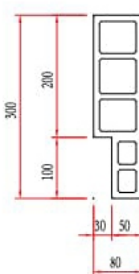
7#



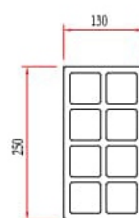
11#



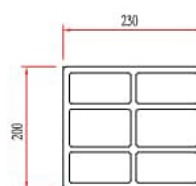
8#



15#



14#



10#



Southeast Zhihui City (Shijiazhuang, Hebei)

2018-2019

Architects: Jiu Yi Zhuang Cheng Engineering Design Co., Ltd

Terracotta Panels (Natural Finish)

Terracotta Elements (Special Shapes)

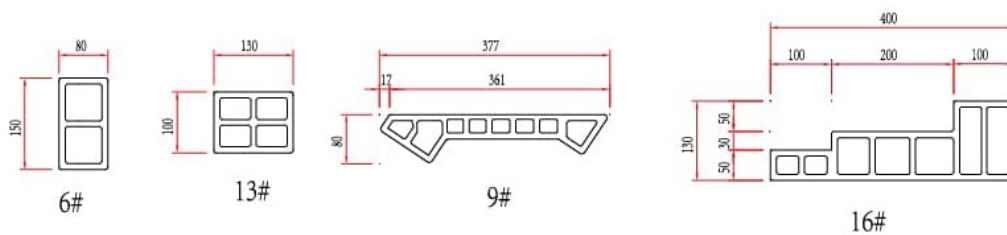
Item NO.: FY5930231/FY5030799

T100180231/T200230231/T130210231/T80377231/T180200231/T80100231

/T100130231/T120150231/T80250231/T80150799/T130300231

Size: 595x30mm/ 100x180/100x230/210x130/377x80/200x180/100x80

/100x130/150x120/250x80/150x80/300x130mm





An Ju Shang Long Apartment (Shenzhen, Guangdong)

2021

Terracotta Panels (Natural Finish)

Item NO.: FJ5030003/F6030003/FJ5030889/F6030889

Size: 500x30/600x30mm

LOPO®

www.lopochina.com



Shanshui Wenyuan Residential Community (Beijing)

2016-2018

Architects: Beijing New Era Construction Engineering Design Co., Ltd.

Terracotta Panels (Texture: Wood Grainy, Grooved)

Item NO.: FGW3742217/FGW4042217/FGW4542217

Size: 377/400/450x42mm



ZARSIION MANSION (Beijing)

2019-2020

Terracotta Panels (Special Shape)

Terracotta Louvers (Cross-Section: Triangle)

Item NO.: F3021632/FG4533632/T150150883

Size: 300x21/450x33/150x150mm



Xi'an High-tech No.1 Middle School (Xi'an, Shaanxi)


2015

Terracotta Panels (Texture: Sanded)

Item NO.: FH6025632

Size: 3600x25x1200mm





The architects, with a unique taste, chose warm-colored wood grain digital inkjet tile and light gray stones as the external wall cladding, allowing a perfect blending of nature into the building. It avoids being modern yet rigid and brings soft and pleasant visual effects. The project adopts LOPO Terracotta Panels with 3D wood grain inkjet surface and straight sided edges.



LOPO®
www.lopochina.com

Kunming Shanhui Villa (Kunming, Yunnan)

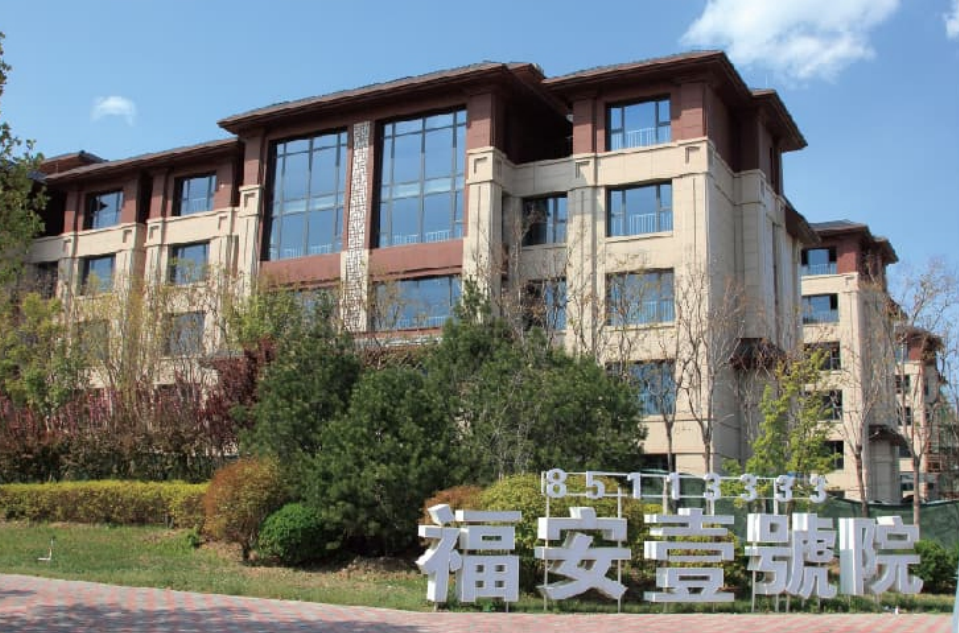
2017-2018

Terracotta Panels (3D Inkjet Panels, Granite Surface)

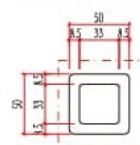
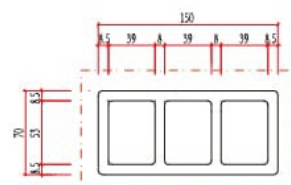
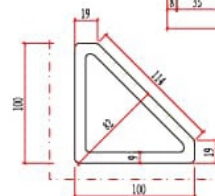
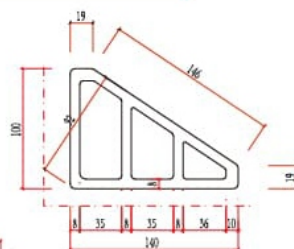
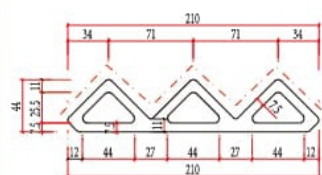
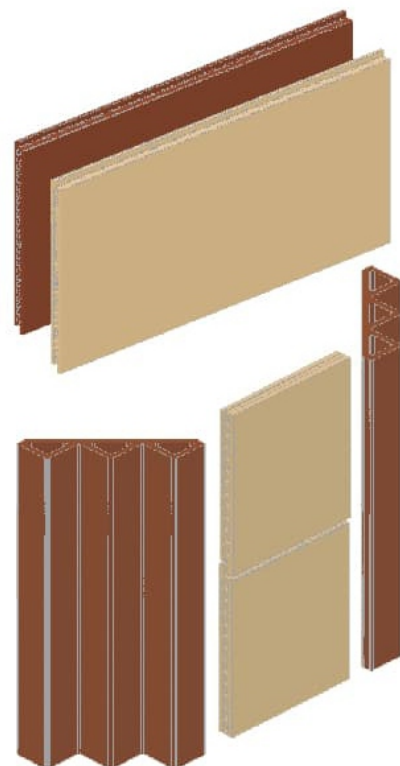
Item NO.: FD6022217/FD6022002

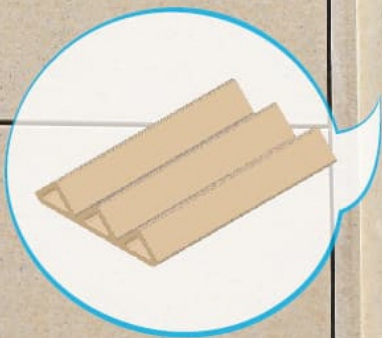
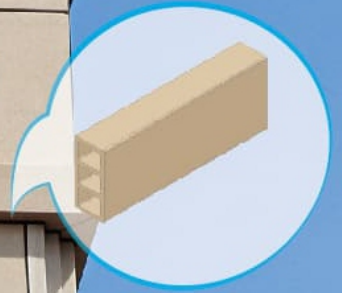
Size: 600X22mm





乐普工程案例





Fu'an No.1 Villa (Shijiazhuang, Hebei)

2021-2022

Terracotta Panels (3D Inkjet Panels, Stone Texture)

Terracotta Elements (Special Shape)

Item NO.: F6521771/FP6521230/T2144771/TP2144230/T5050771/
TP5050230/T70150771/TP70150230/T100100771/T100140771

Size: 650x21/210x44/50x50/70x150mm100x100/100x140
(Triangular cross-section)

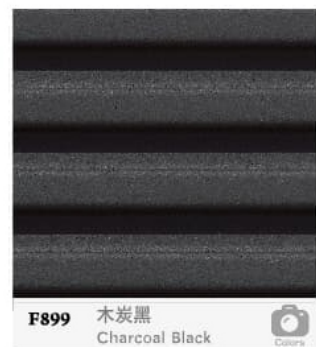
Architectural **Colors** of LOPO Terracotta Facades

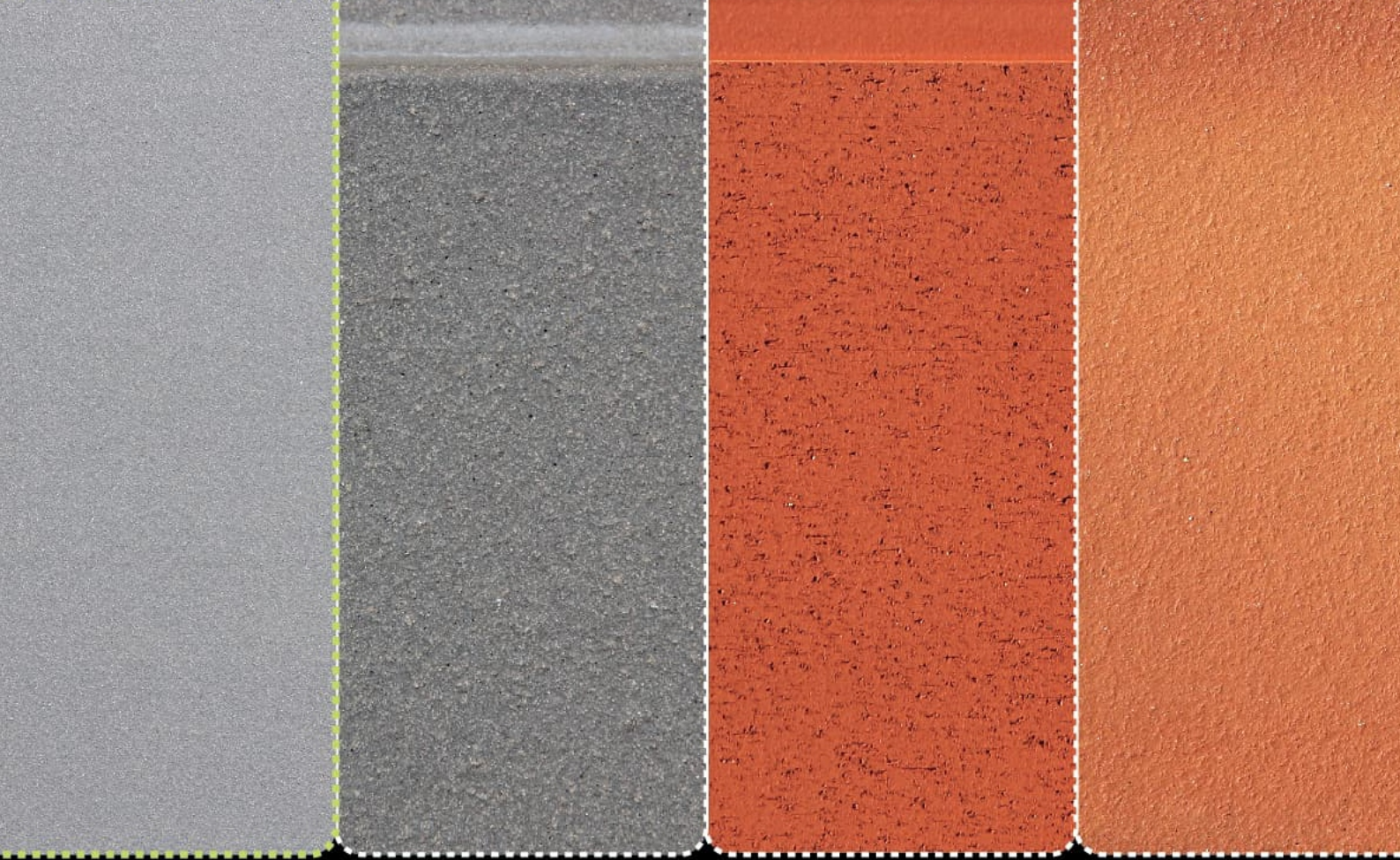
Natural fired colors

Natural Fired Colors

			
F011 米黄色 Beige	F236 香槟黄 Champagne Yellow	F633 天然红 Natural Red	F770 铁锈红 Rust Red
			
F230 杏黄色 Apricot Yellow	F238 桔黄色 Orange Yellow	F635 樱桃红 Cherry Red	F773 浅咖啡 Coffee
			
F232 沙黄色 Sand Yellow	F630 橙红色 Salmon Pink	F692 胭脂红 Carmine	F777 巧克力色 Chocolate
			
F235 金橘黄 Kumquat Yellow	F632 珊瑚红 Coral Red	F639 朱红色 Chinese Red	F789 紫砂色 Purple Sands

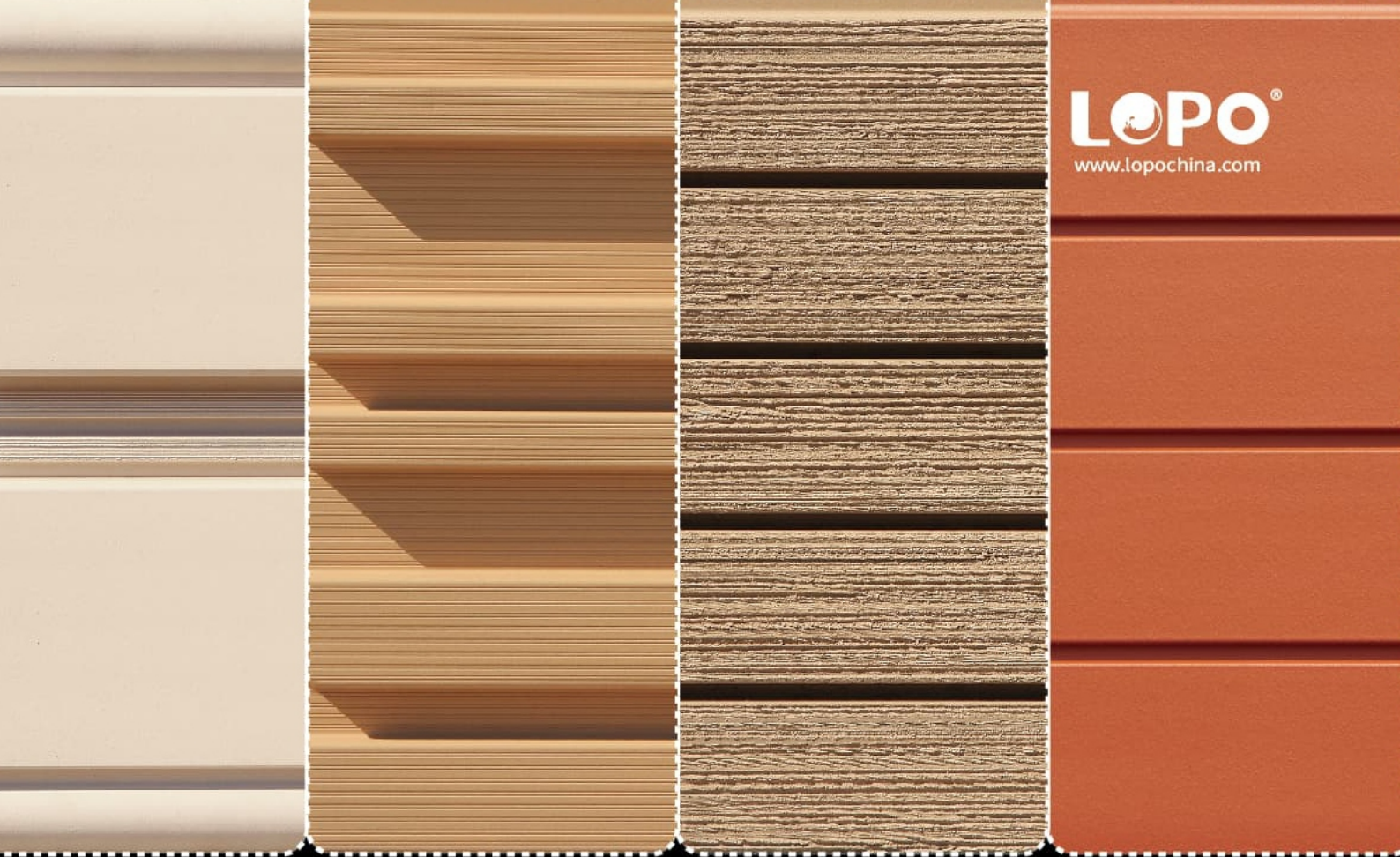
LOPO terracotta panel series with natural colors are created by using high-quality natural clay, complex mixing process and firing technique with precise temperature control. The natural fired colors cover a wide range, including all the colors with various shades and tones which are based on five basic colors of white, yellow, brown, red, and gray. These are through-body colors and stand well to the test of the time and various climatic conditions. When LOPO's terracotta plates are used, the building's facade demonstrates long-lasting excellent performance in terms of color and surface.



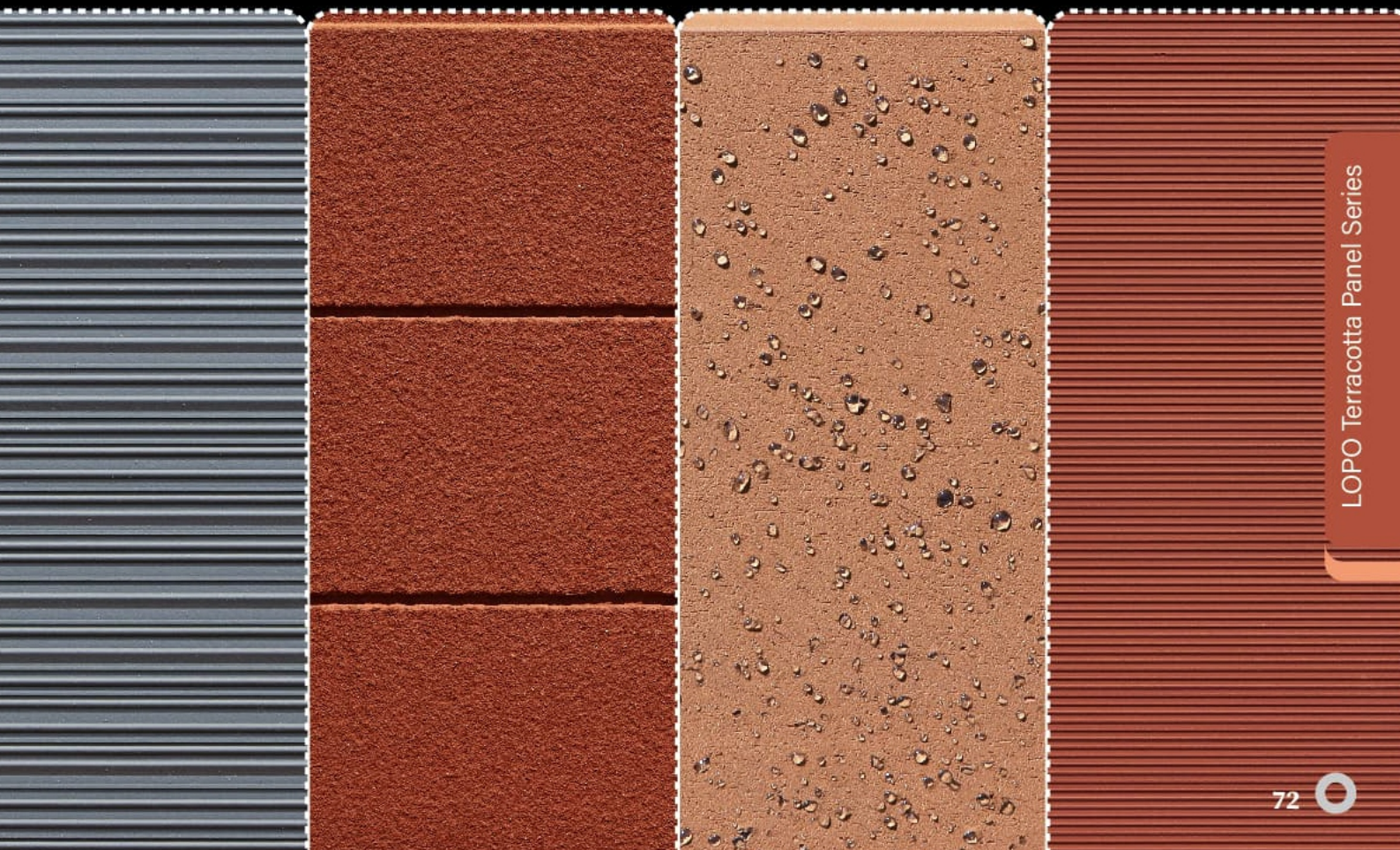


LOPO terracotta facades come with a wide range of custom and standard natural fired colors and colorful glazing. Different finishes & textures are available, such as sandblasted, combed, honed, wood texture, wavy, 3D ink-jetting.



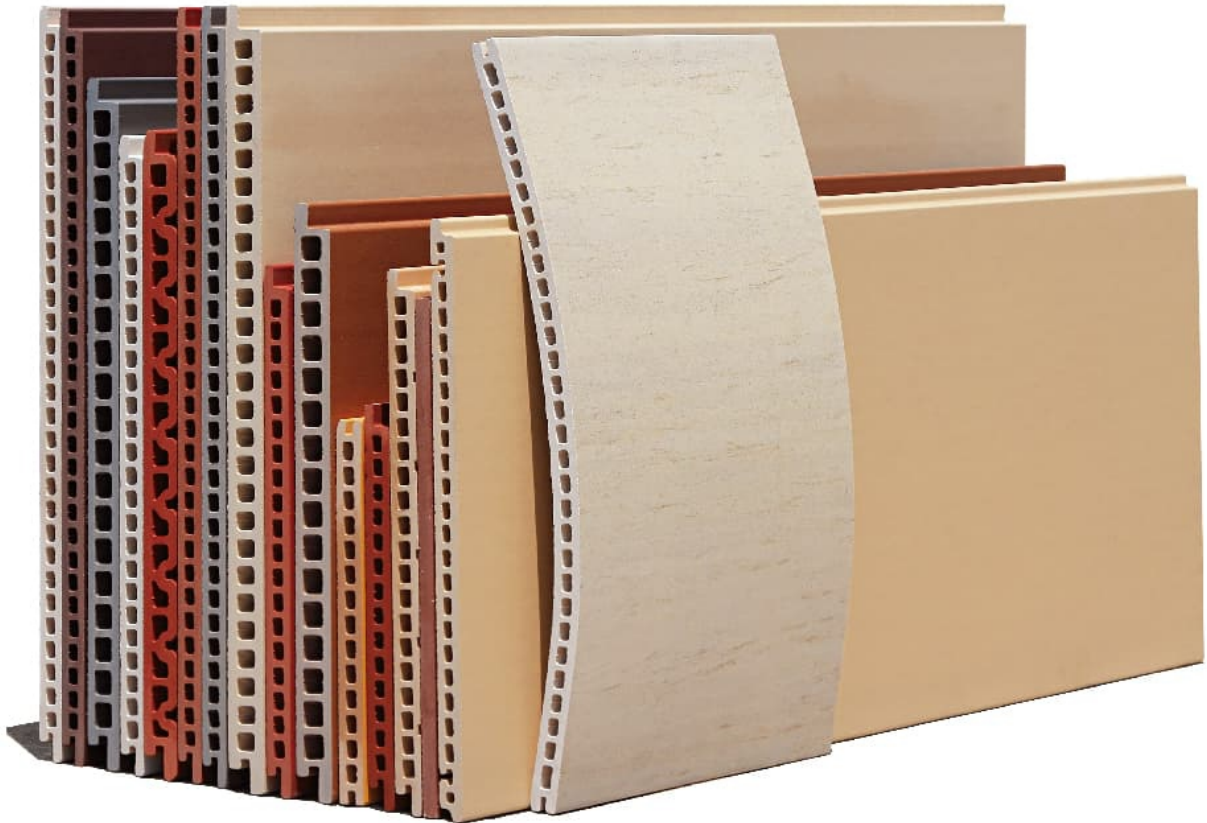


LOPO Textures & Finishes



LOPO Terracotta Panel Sizes

Dimensions can be customized on request.



LOPO can provide terracotta panels of different thickness, dimensions, shapes and profiles, based on curtain wall structure design, installation system, facade design, wind load and other requirements.

Thickness

Thickness: 12mm 15mm 18mm 21mm 25mm 30mm 45mm

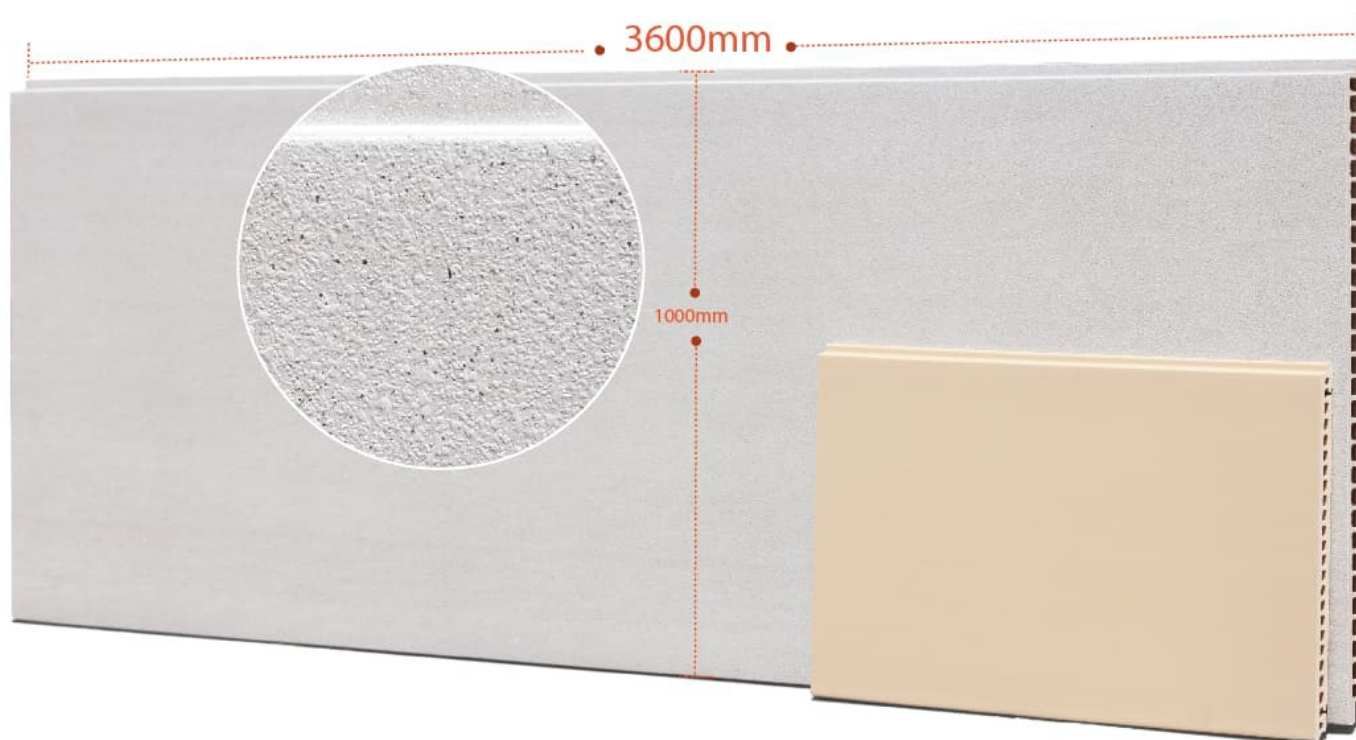


Heights and Lengths

In 2022, LOPO China can produce terracotta panels up to 3 meters in length through the latest third production line.

Height: 150mm-1000mm

Length: 250mm-3600mm

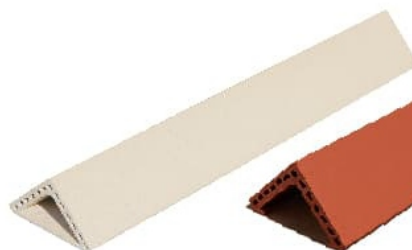


Special Terracotta Elements

Windows Panels



Corners



Natural Finish

LOPO terracotta facade panel of natural smooth surface can perfectly bring out the original beauties of clay products. Different fineness of natural surface can be created according to the requirement.

★ Colors can be customized on request.

Height: 150mm-1000mm Length: 250mm-3600mm
Thickness: 12mm 15mm 18mm 21mm 25mm 30mm

Natural fired colors



NO: F601801



NO: F451826



NO: F502226



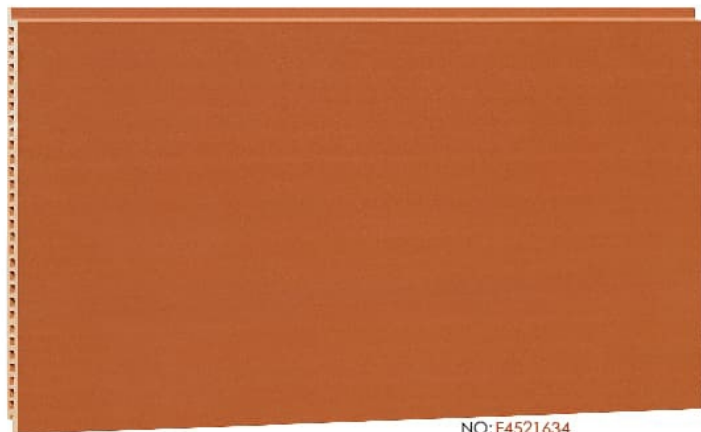
NO: F451884



NO: F152461



NO: F301463



NO: F4521634



NO: F4022886



NO: F3018003



NO: F4030002



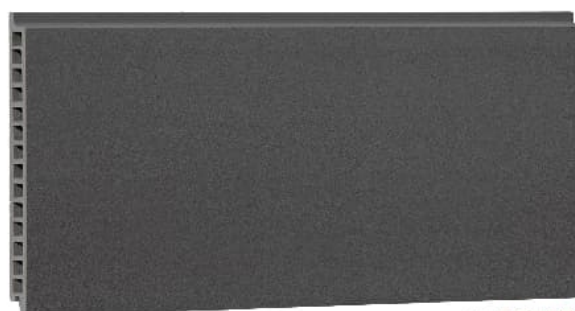
NO: F3018990



NO: F3018882



NO: F301801



NO: F4030889



NO: F3018231



NO: F3016886



NO: F303065



NO: F302285

Natural Finish

Kiln-transmutation terracotta is one of our new products that combine the traditional ceramic making techniques with modern kiln firing technology. Through the special process, the product undergoes a natural and beautiful transition in colors. The color changes not only occur between the product in the same batch, but also on the same product.

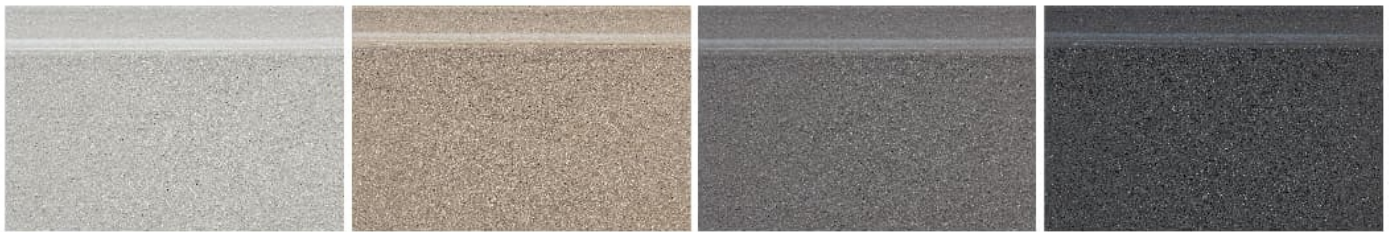


NO:F238

NO:F634

NO:F639

NO:F562

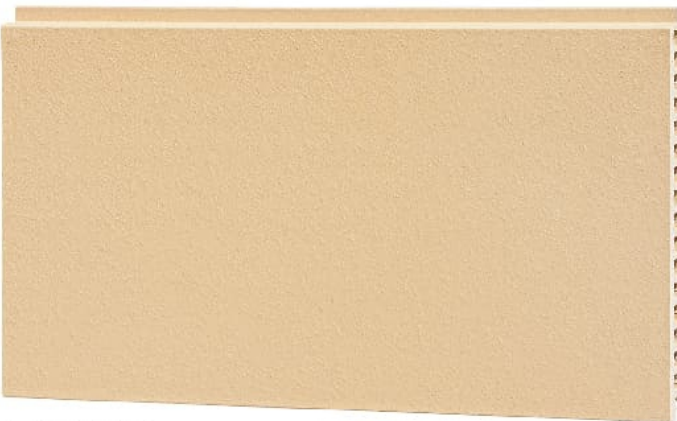


NO:F883

NO:F858

NO:F886

NO:F889



NO:F4530231



NO:FC2420632

Kiln-transmutation Terracotta Surface



NO:FC2420635

Kiln-transmutation Terracotta Surface

LOPO Terracotta Stair Treads and Risers

Dimensions can be customized on request.

LOPO stair products follow modern architectural aesthetic trends and meet functional needs. The series features the "one-step molding" process and has transformed traditional small-sized stair tread to one-step molded large stair panel, with an anti-slip slot being formed at the same time during the production. Compared to traditional treads, stair panel is more convenient to be used in constructions and looks more integrated and magnificent.



NO: LMN236



NO: LMN636



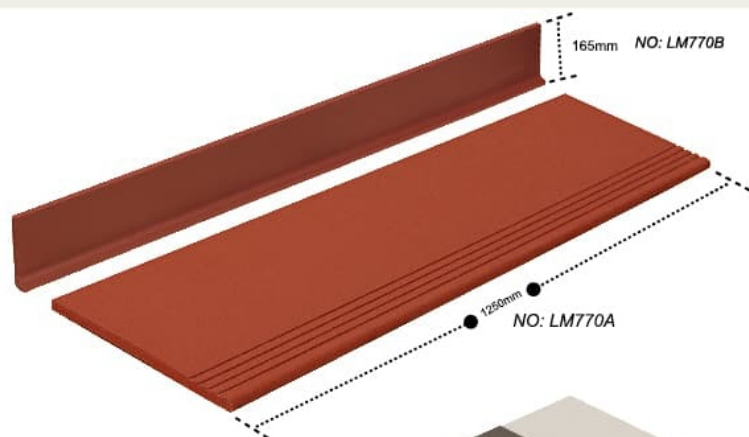
NO: LMN773



NO: LMN889

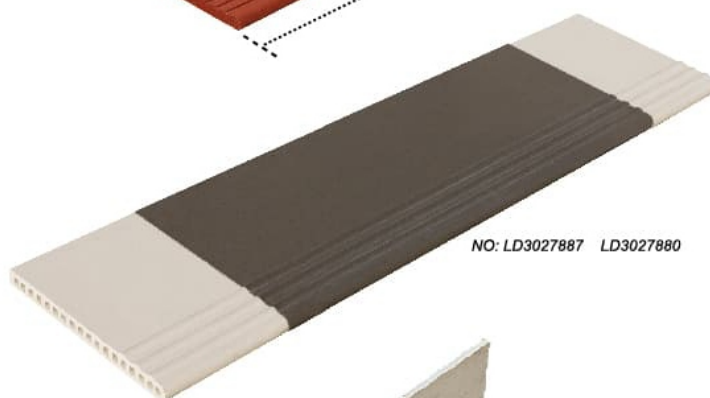


NO: LWMN217



165mm NO: LM770B

1250mm NO: LM770A



NO: LD3027887 LD3027880



NO: LWM817



NO: LWM717



Qiaoxin & Boly Huijing Apartment (Guangzhou, Guangdong)

2021-2023

Architects: SHING & PARTNERS

Terracotta Panels (Combed, Curved)

Terracotta Elements (Special Shape)

Item NO.: FGX60555230/FGXA60555230/FGXA53555230/
FGXA55555230/FGXA60555230

Size: 608x55/608x55/537x55/550x55/600x55mm



NO:FGX6055230

Special-shaped Terracotta

★ Colors can be customized on request.

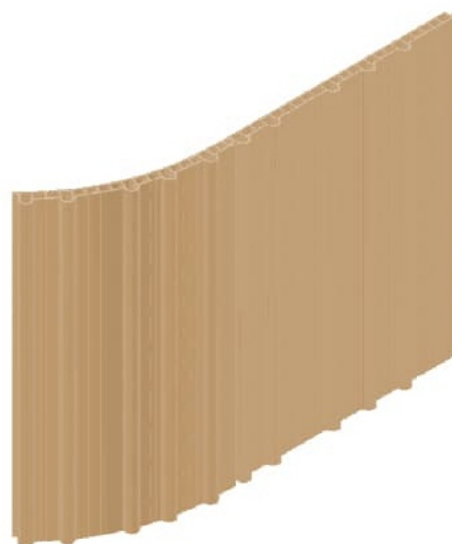
Height: 150mm-1000mm Length: 250mm-3600mm
Thickness: 18/21/25/30/45/60/80mm

Natural fired colors

LOPO can closely collaborate with the clients to customize and re-design the profiles, shapes, surface textures, colors, glazes of the terracotta tiles and sunshades and the installation systems to fulfill the unique design requests of architectural projects.



NO:FGXA5555230



NO:FG4545239

Special-shaped Terracotta

★ Colors can be customized on request.

Height: 150mm-1000mm Length: 250mm-3600mm

Thickness: 18/21/25/30/45/60/80mm

Natural fired colors



NO:FCS1950231



NO:FC6050231



NO:FGS6040635



NO:FWGL353501



NO:FWGL3535238



NO:BS27050258



NO: FG301876



NO: T80250231



NO: FG3018889



NO: FG4930633



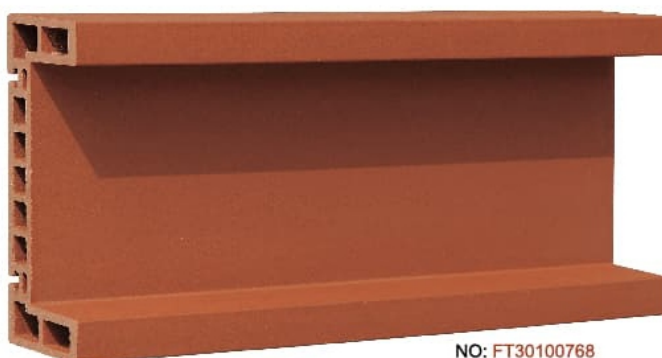
NO: FG4029886



NO: FS5451693



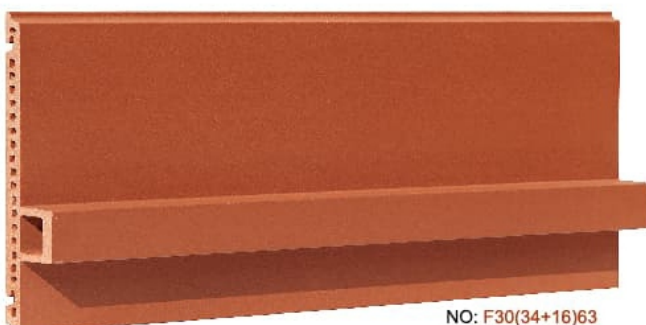
NO: FGS2242883



NO: FT30100768



NO: FG105077



NO: F30(34+16)63



NO: FS3844637

Special-shaped Terracotta

★ Colors can be customized on request.

Height: 150mm-1000mm Length: 250mm-3600mm

Thickness: 18/21/25/30/45/60/80mm

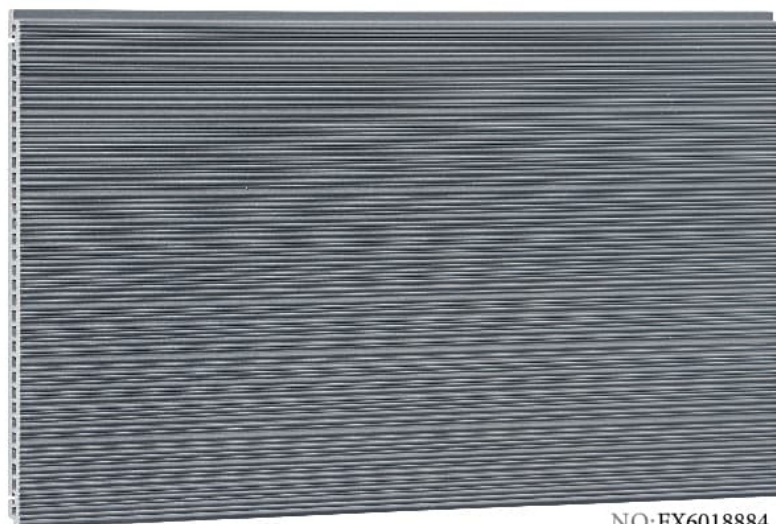
Natural fired colors



NO:FX3021011



NO:FX4325880



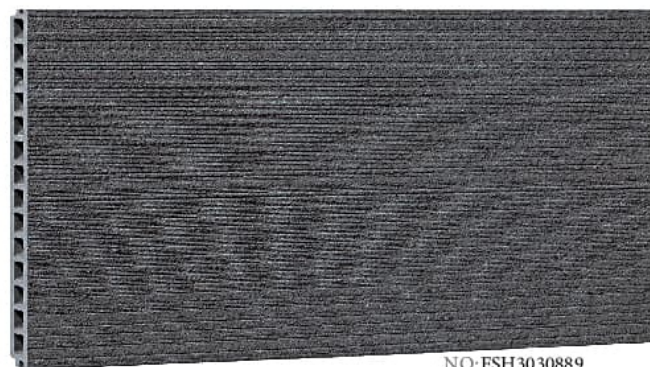
NO:FX6018884



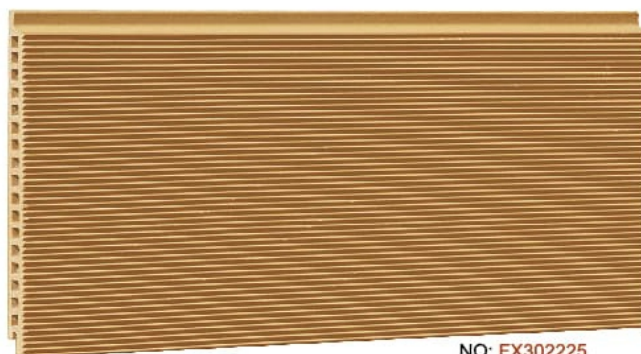
NO:FS3021886



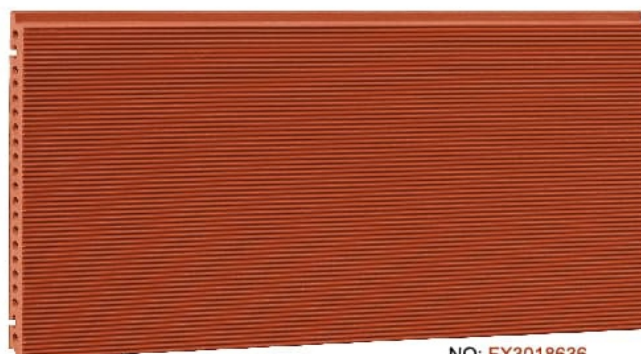
NO: FX3018994



NO:FSH3030889



NO: FX302225



NO: FX3018636



NO: FX3018238



NO: FX301825



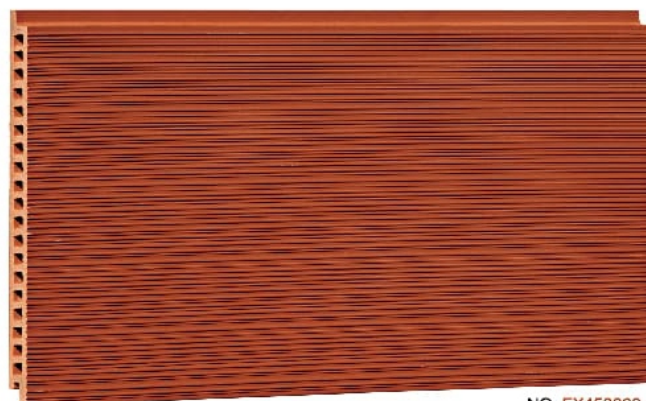
NO: FG6018635



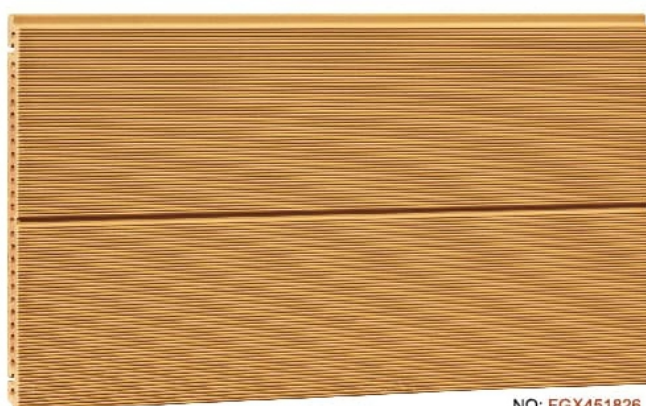
NO: FG4518636



NO: FG503363



NO: FX453069



NO: FGX451826



NO: FG6025880



NO: FG6018882

Special-shaped Terracotta

★ Colors can be customized on request.

Height: 150mm-1000mm Length: 250mm-3600mm

Thickness: 18/21/25/30/45/60/80mm

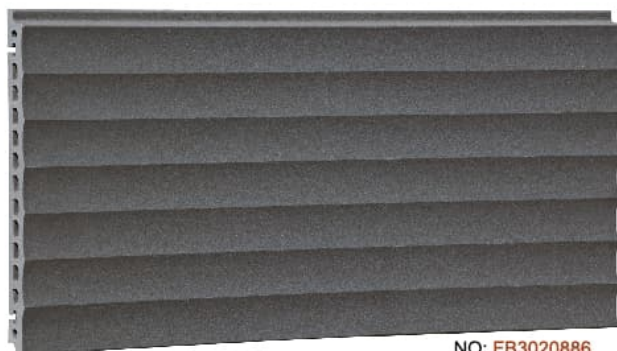
Natural fired colors



NO: FB3020018



NO: FB6048003



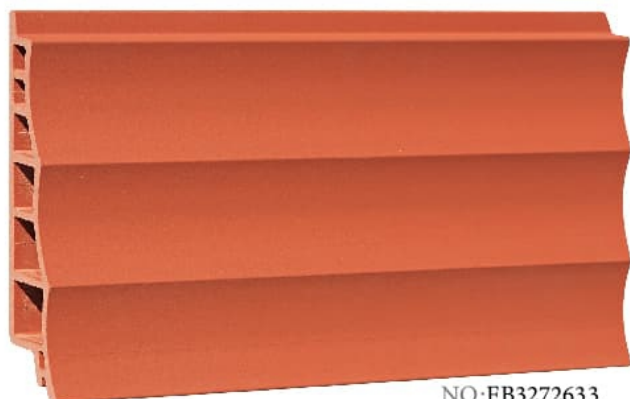
NO: FB3020886



NO: FG5060001



NO: FB3229633



NO: FB3272633



NO: FG5060003



NO:FB6057230



NO:FG3030632



NO:FS5950003



NO:FG3030632



NO:FS5950003



NO:T80377231



NO:FB2851001



NO:FG3930230



NO:FT408169



NO:FGX5045003

Special-shaped Terracotta

★ Colors can be customized on request.

Height: 150mm-1000mm Length: 250mm-3600mm

Thickness: 18/21/25/30/45/60/80mm

Natural fired colors



NO:FLM4521636



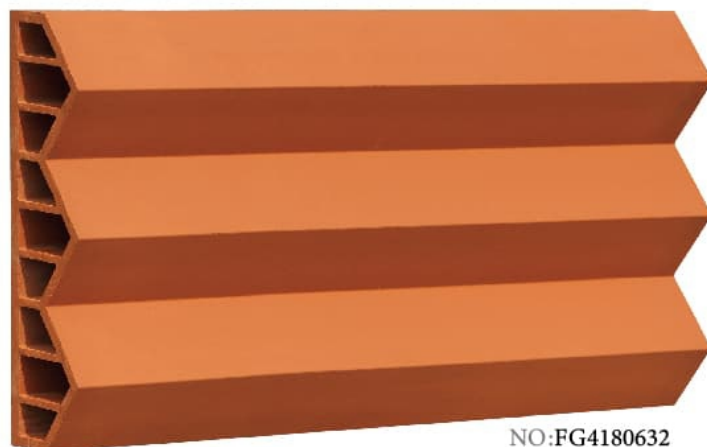
NO:FHXD3020576



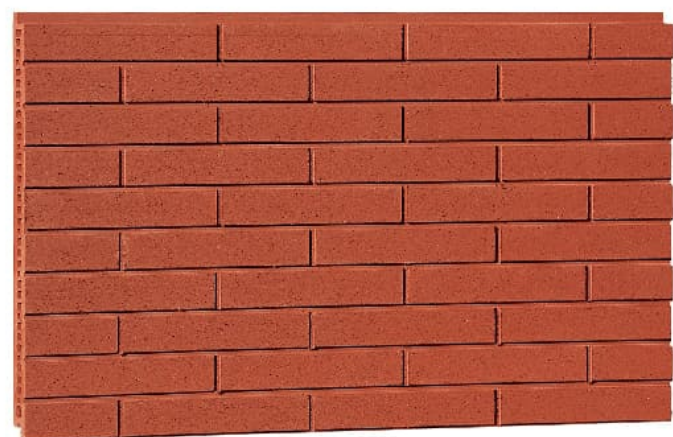
NO:T4080773



NO:FDG4521635



NO:FG4180632



NO: FLG46030637



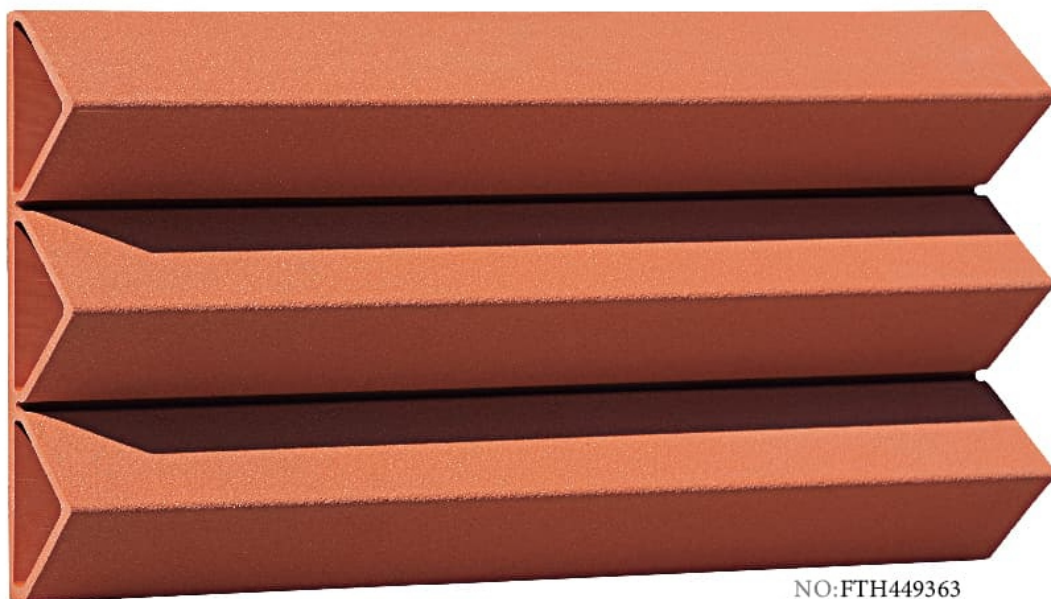
Sanding Finish

★ Colors can be customized on request.

Height: 150mm-1000mm Length: 250mm-3600mm
Thickness: 18/21/25/30/45/60/80mm

Natural fired colors

Sanding terracotta series can convey a distinctive sense of design and touch compared with natural surface. LOPO can provide sanded terracotta panels with different level of roughness upon request.

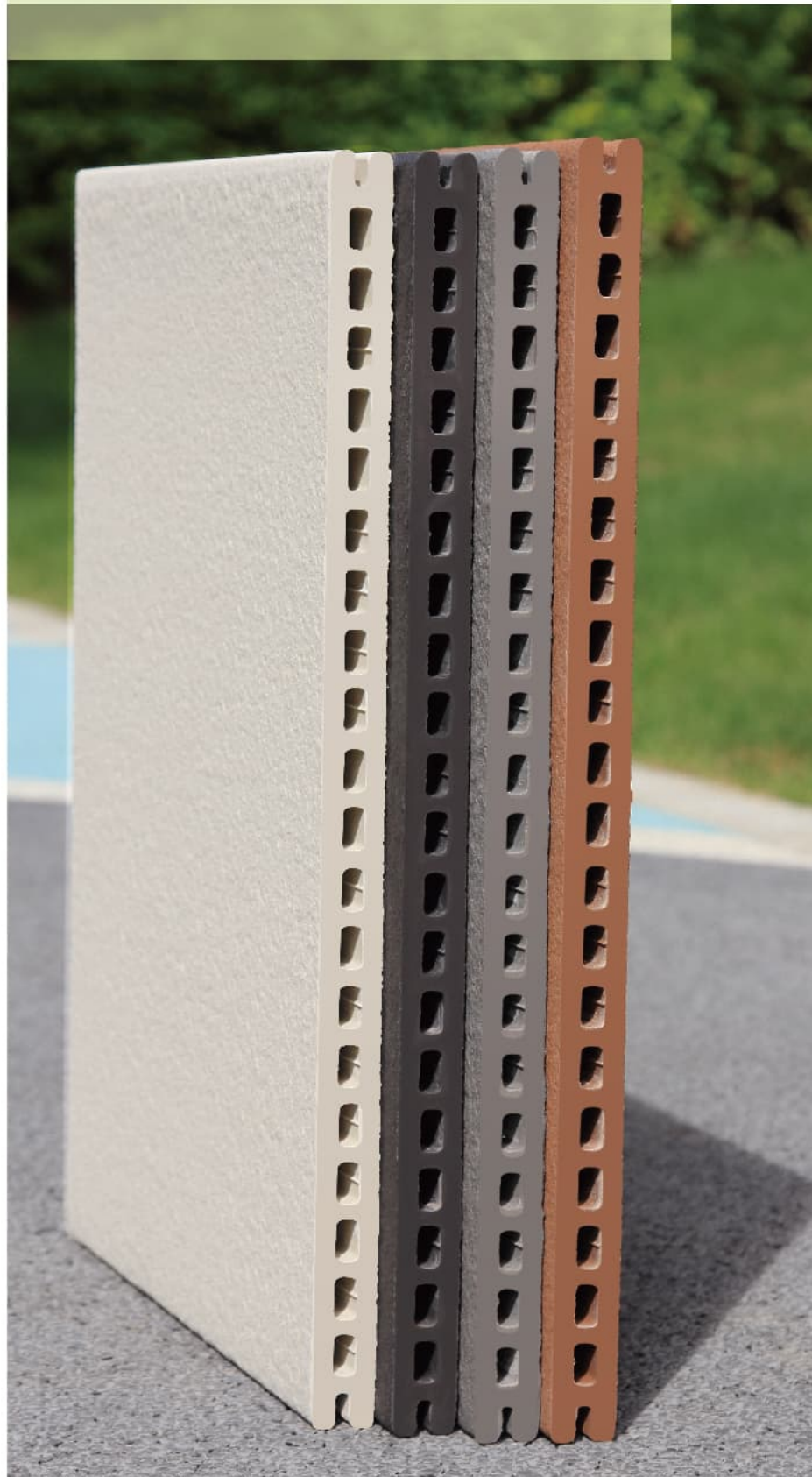
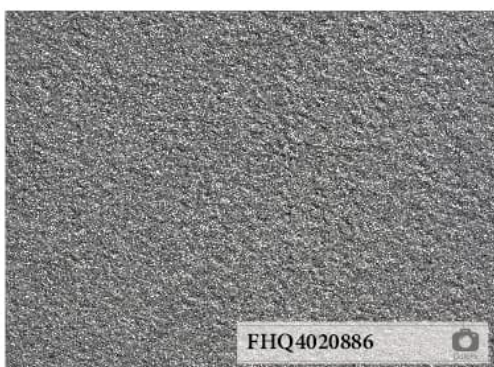


NO: FTH449363

With the upgrading of LOPO raw material processing system and extrusion technology, we have produced a unique series of extruded ceramic panels with sophisticated finishes and excellent technical quality.

Extruded Ceramic Panels

Colors can be customized on request.



Sanding Finish

Sanding terracotta series can convey a distinctive sense of design and touch compared with natural surface. LOPO can provide sanded terracotta panels with different level of roughness upon request.

NO: FH3018001

NO: FH3018230

NO: FH3024884

NO: FH203062

NO: FC3030637

NO: FH3018234(Y2)

NO: FHG5018640

NO: FYGH5430889

Wood Grain Texture

The wood grain terracotta panel series is made by applying a special molding process of LOPO. The wood grain series features natural texture and rich color options for facade, indoor walls or floors.

★ Colors can be customized on request.

Height: 150mm-1000mm Length: 250mm-3600mm
Thickness: 12mm 15mm 18mm 21mm 25mm 30mm

Natural fired colors



NO: FW3018217



NO: FW3014217



NO: FW3018617



NO: FW3014617



NO: FW3018218



NO: FW6025235



Solid Terracotta Tiles (with glaze dots)



NO:LP012



NO:LP630

Sandstone Texture

Height: 150mm-1000mm Length: 250mm-3600mm
Thickness: 12mm 15mm 18mm 21mm 25mm 30mm

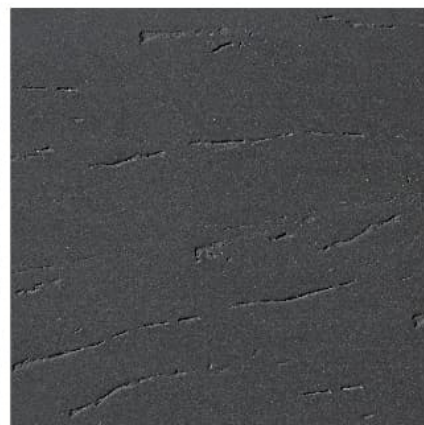
Natural fired colors



NO:FPW817



NO:FPW017



NO:FPW889

Solid Terracotta Tiles

Terracotta Solid Tile is thin and light-weight cladding material that is ideal for precast construction looking for a terracotta facing appearance. LOPO provide solid tile with either straight side or a shiplap rainscreen joint. It imposes less pressure on wall structure, so it is an ideal terracotta facade for interior wall or low-rise exterior walls.

★ Colors can be customized on request.

Height: 150mm-1000mm Length: 250mm-3600mm

Thickness: 12mm 15mm 18mm 21mm 25mm 30mm

Natural fired colors



No. LW1010217
SIZE:100X300X10MM



No. LW1010617
SIZE:100X300X10MM



NO: LW1510616



NO: LW1510716



NO: LW3010217



NO: LW3010618



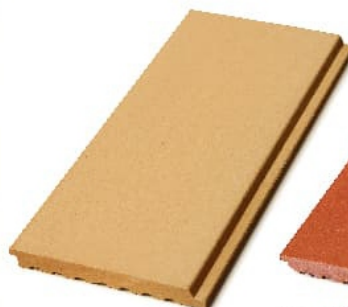
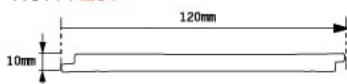
NO: LW3010617



NO: LW3010717



NO: FR231



NO: FR231
SIZE:120X300X10MM



NO: FR632
SIZE:120X300X10MM



NO: FR772
SIZE:120X300X10MM

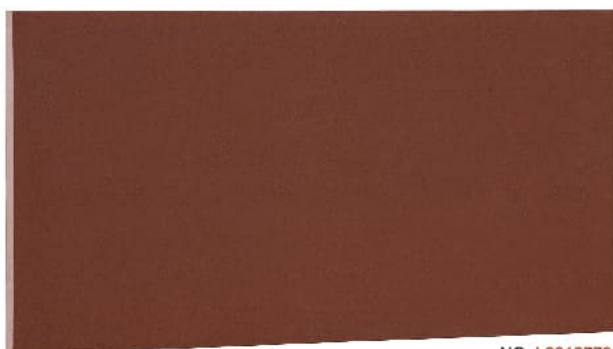
Solid Terracotta Tiles



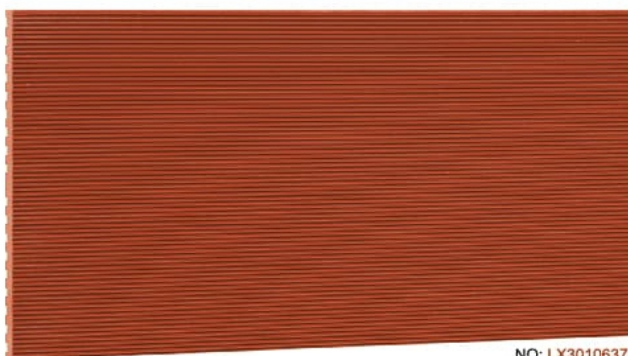
NO: L301001



NO: LX770



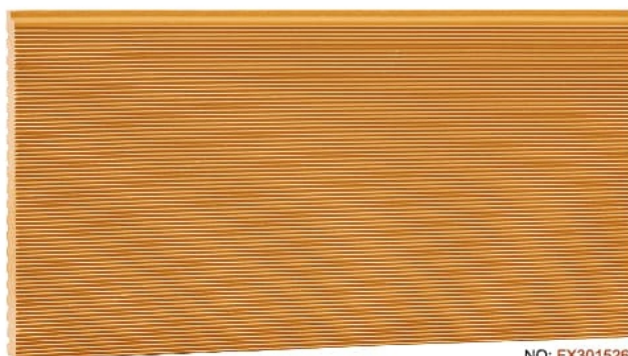
NO: L3012779



NO: LX3010637



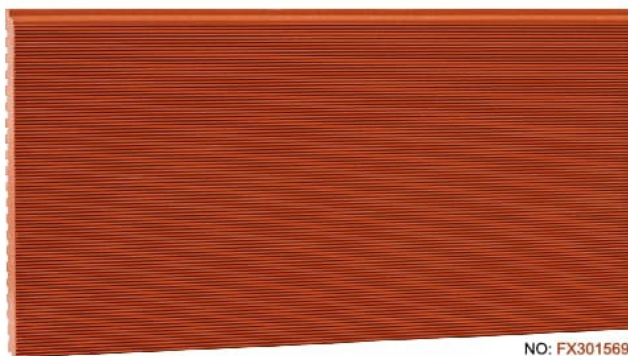
NO: L3012632



NO: FX301526



NO: LH3010889



NO: FX301569



NO: LH3010579

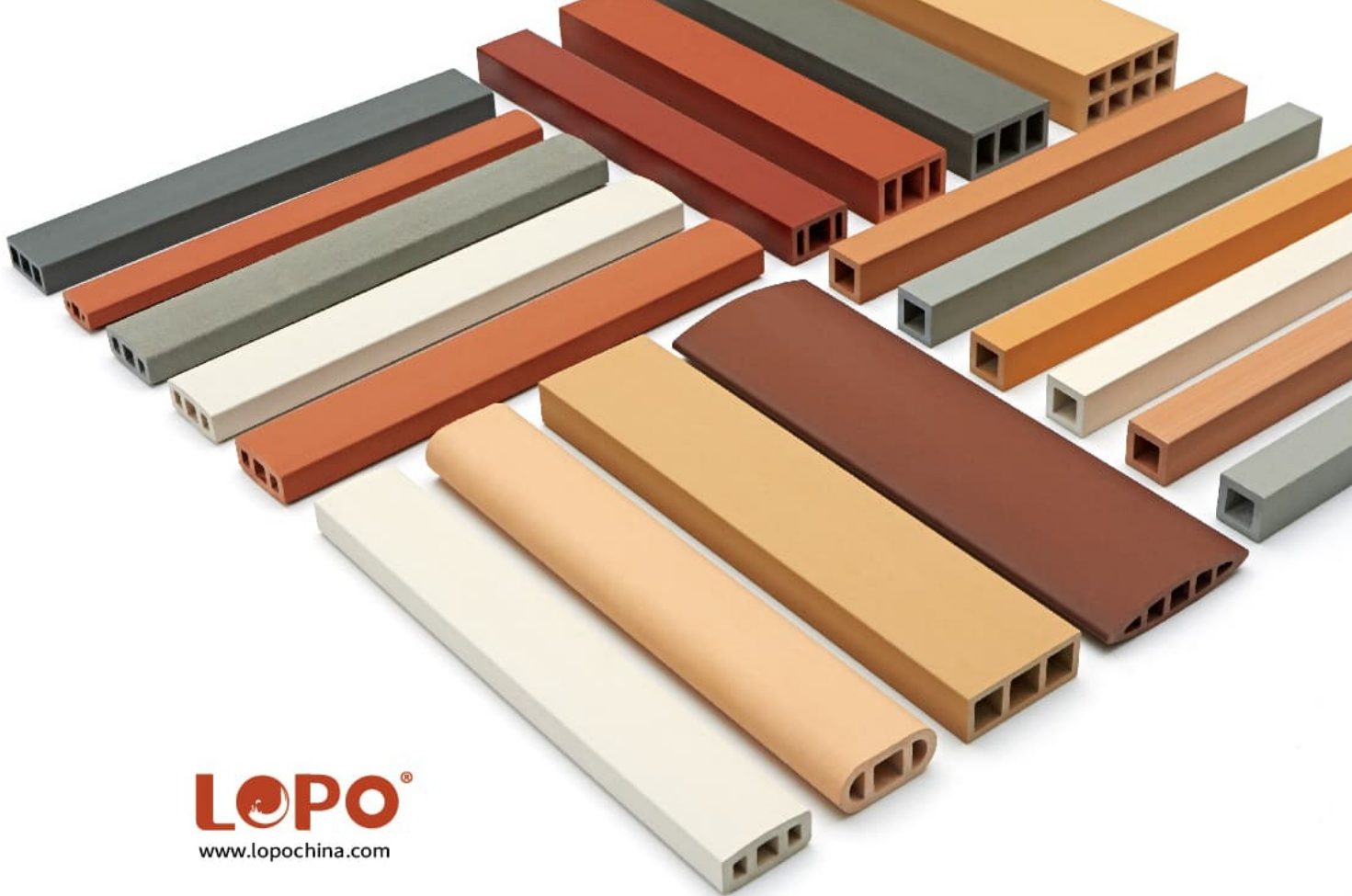


NO: LX3010899



Kiln-transmutation Terracotta Baguettes

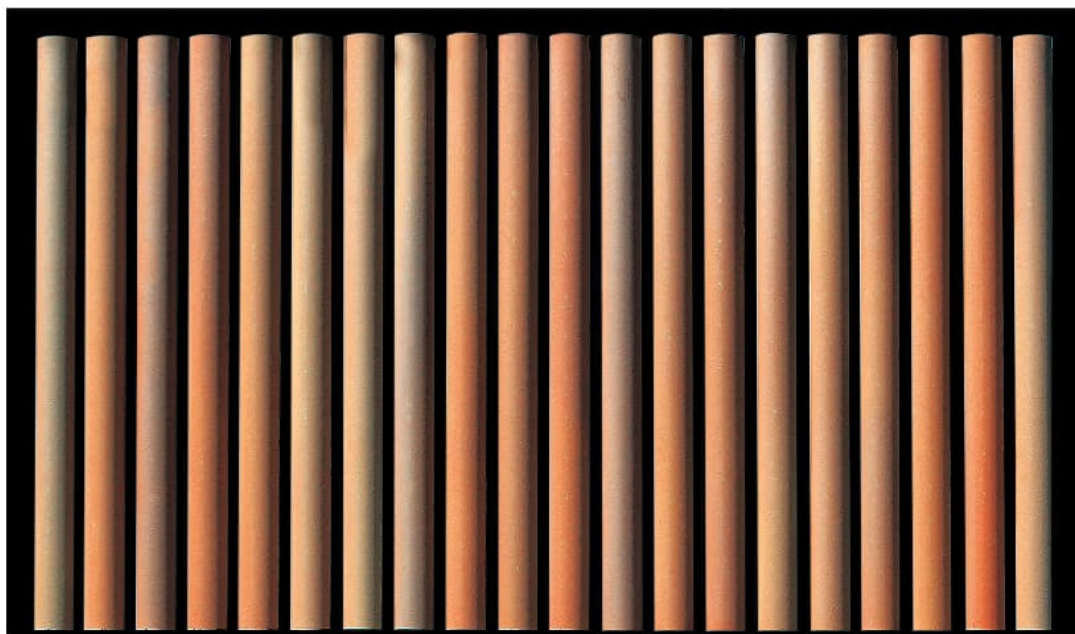
Tongchuan Museum (Xi'an)



LOPO®
www.lopochina.com

Terracotta Baguettes / Terracotta Louvers

LOPO terracotta baguettes and terracotta louvers are often designed and used in front of glass curtain walls, window area, passages, producing a shading effect for the building. It's also a very special architectural design element when used alone. Whether designed on the facade of a building or on an interior wall, this product can create a unique visual effect.



Kiln-transmutation Terracotta Baguettes

Terracotta Baguettes *Terracotta Louvers*

Maximum Length: 1800mm



No. T4520003



NO:T5050003



NO:T505026



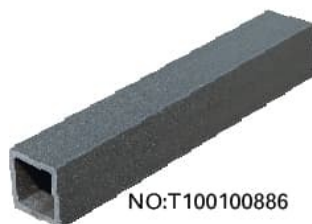
NO:T505060



NO:TW5050617



NO:T5050883



NO:T100100886



NO:T356062



NO:T408563



NO:T4085001



NO:TH4085883



NO:T50100231



NO:T4090886



NO:TS40100768



NO:TY5080639



NO:T6012062



NO:T50150235



NO:T6010063



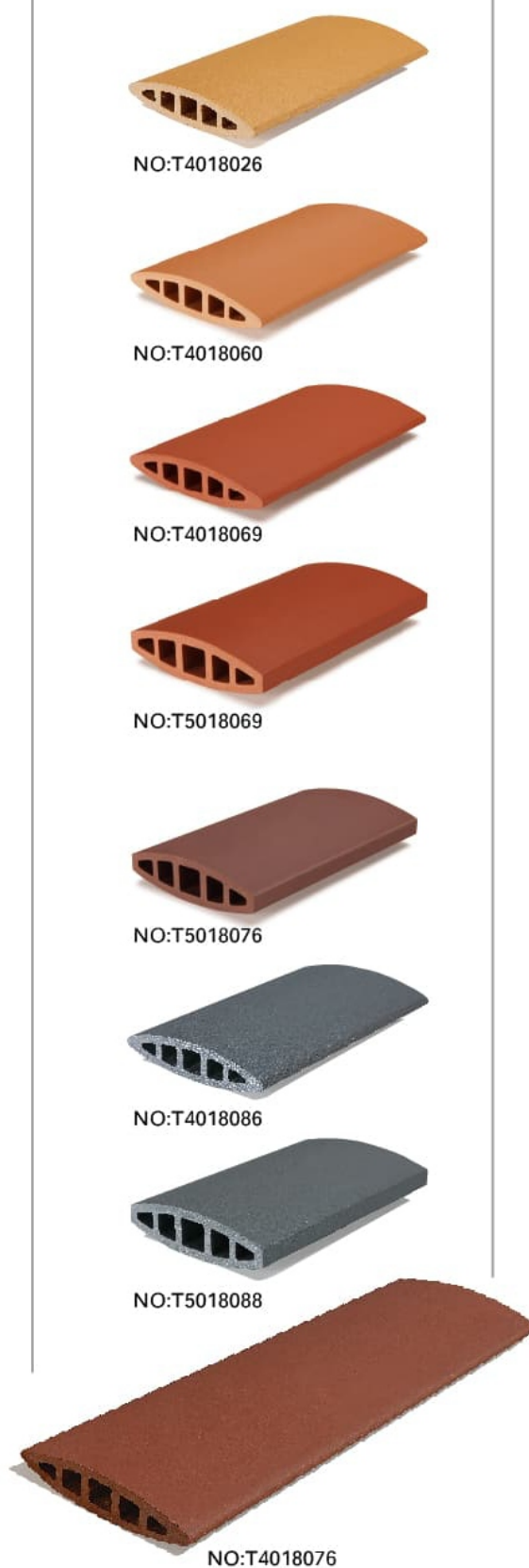
NO:T6012086



NO:T50150636



NO:T80160235

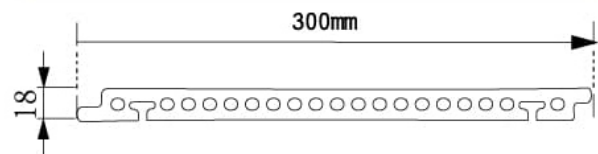




Glazing Colors

Glazed Terracotta Panels

LOPO terracotta facade panel can be produced based on RAL colors. Both matt and glossy surface are available upon request.



★ Colors can be customized on request.

Height: 150mm-1000mm Length: 250mm-3600mm

Thickness: 12mm 15mm 18mm 21mm 25mm 30mm



NO: FBY2260999

Glazing Colors

Glazed Terracotta Panels



NO: FY3024003



NO: FY3018250



NO: FY3024240



NO: FY3018660



NO: FY3018639



NO: FY3018901



NO: FGY3018235



NO: FY4520212



NO: FY6018236



NO: FY3030056



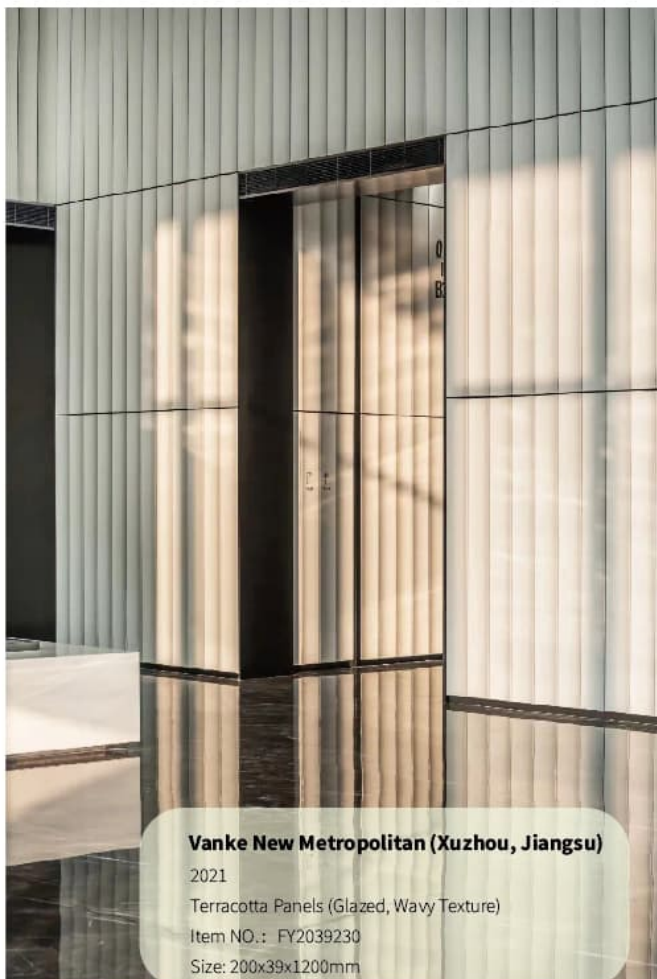
NO: FY5520239

Glazed Terracotta Panels

Height: 150mm-1000mm Length: 250mm-3600mm
Thickness: 12/15/18/21/25/30/45/60/80mm



NO: FY2039003



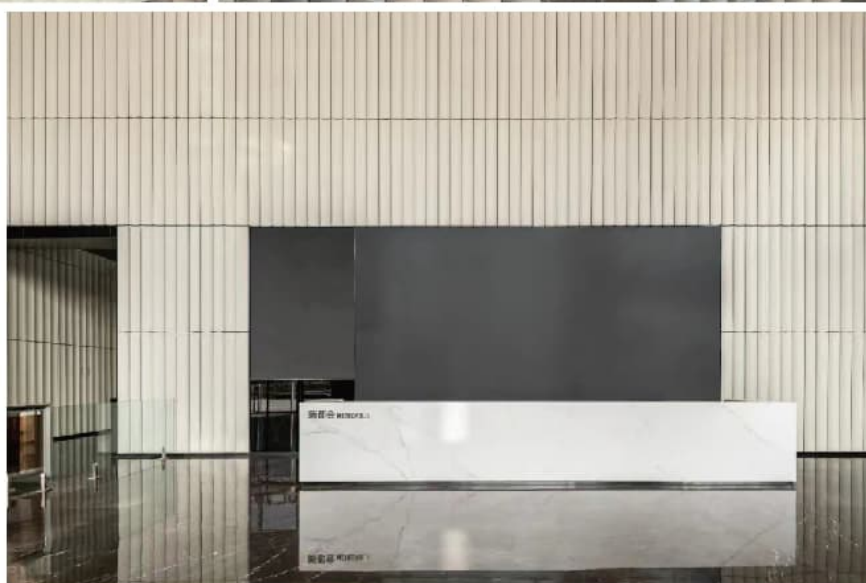
Vanke New Metropolitan (Xuzhou, Jiangsu)

2021

Terracotta Panels (Glazed, Wavy Texture)

Item NO.: FY2039230

Size: 200x39x1200mm



• 3500mm •



NO: FZB5343003



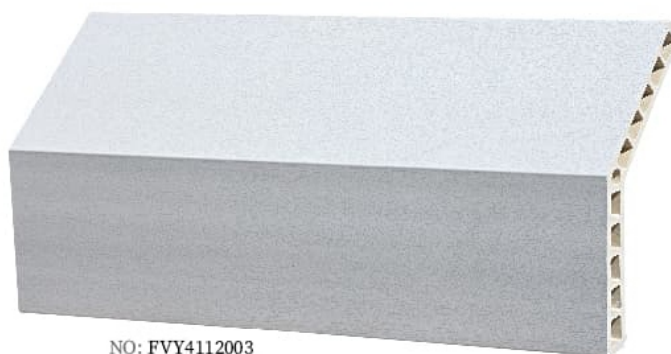
NO: FY2130003



NO: FLY3030003



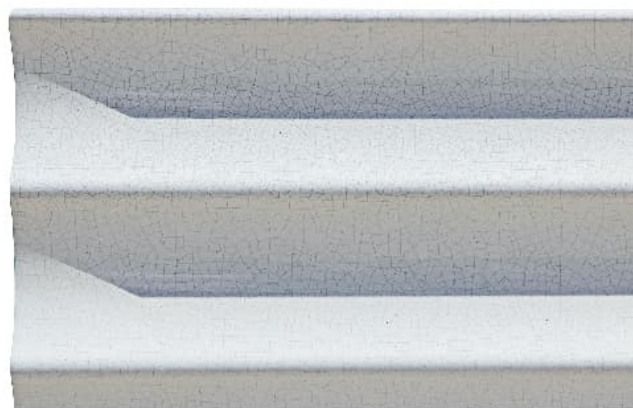
NO: FBY6038003



NO: FVY4112003



NO: FBY4937003



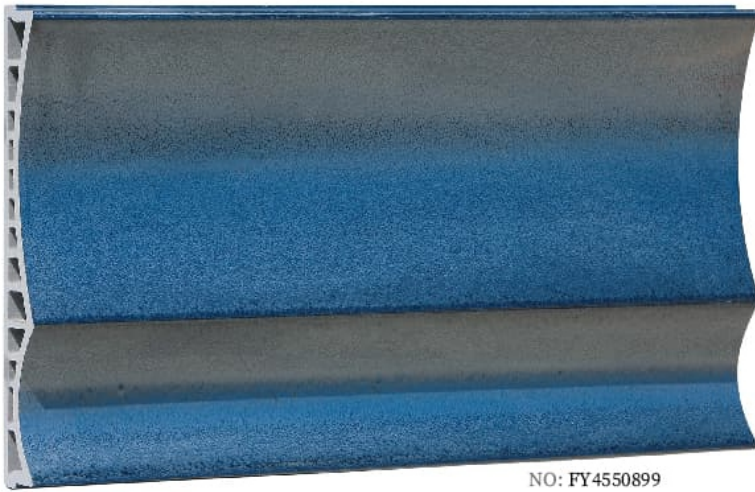
Glazing Colors

Glazed Terracotta Panels

LOPO terracotta panels with glazing surfaces give more creative space for those designers who are ambitious in color design while at the same time fully capitalize on terracotta facade features of thermal insulation, sound-proofing, energy savings.

Height: 150mm-1000mm Length: 250mm-3600mm

Thickness: 12/15/18/21/25/30/45/60/80mm



NO: FY4550899



NO: FYC51110003

NO: FYC51110003



NO: FY1731002



NO: FGY2040991



NO: FXY3740989



NO: FB5030880



NO: FXY4530001



NO: FTY3410003



NO: FGY2838003



NO: FBY3922003



NO: FCY2530026

Digital Inkjet Series

LOPO 3D inkjet series can vividly reproduce the natural surface texture and color of various natural building materials, such as wood, marble and granite. Be it a smooth surface or a matte surface, durable products with constant color can add much charm to your project.



NO: FZP4525889



NO: FP6021883



NO: FZP6025886



NO: FD6022002



NO: FP6021230



NO: FZP6025211



NO: FPW5818812



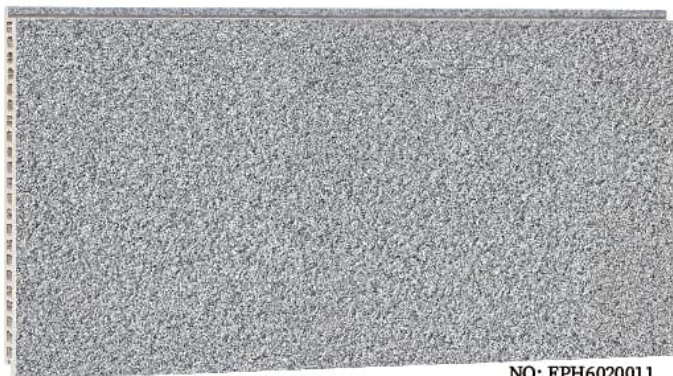
NO: FHXP3022231



NO: FY5030888



NO: FPD3030033



NO: FPH6020011



NO: FPS025860



NO: FP6025252



NO: LHP6010231

Digital Inkjet Series

Marble Texture



NO: PM10



NO: PM01



NO: PM02



NO: PM27



NO: PM04



NO: PM40



NO: PM25



NO: PM12



NO: PM03



NO: PM17

Granite Texture



NO: PM36



NO: PM33



NO: PM07



NO: PM37



NO: PM31



NO: PM29

WOODSTONE



NO: PW627



NO: PW626



NO: PM38



NO: PM43



ООО «ФАСАД КОМПЛЕКТ»

Свердловская обл., г. Екатеринбург,

e-mail: fk@fkomplekt.ru,

тел: 8 (343) 372-32-23, +7(909)703-22-23

сайт: fkomplekt.ru